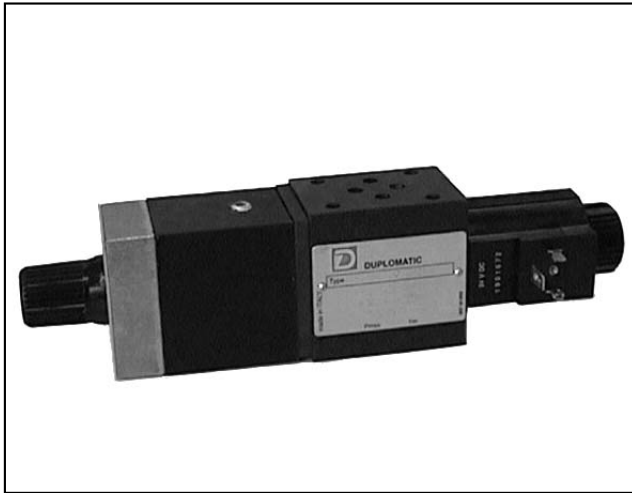




DIPLOMATIC
HYDRAULICS

66 250/104 ED



RL1M

ELECTRIC FAST/SLOW SPEED SELECTION VALVE

SERIES 21

MODULAR VERSION

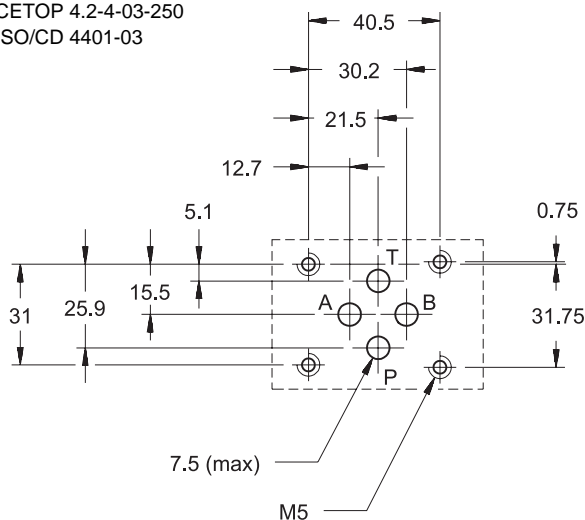
CETOP 03

p max 250 bar

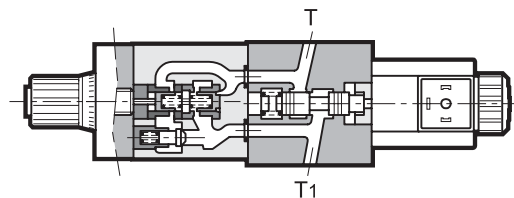
Q max (see performance ratings table)

MOUNTING INTERFACE

CETOP 4.2-4-03-250
ISO/CD 4401-03



OPERATING PRINCIPLE



- The RL1M valve is a compact group that allows control of the fast/slow flow through use of an open/close solenoid valve. The adjustment of the flow is carried out with the RPC1 valve (see catalogue 32 200) with six adjustment ranges.
- Made as a modular version, the mounting surface is according to the CETOP and ISO standards.
- The RL1M valve can be assembled quickly under the CETOP 03 directional solenoid valves without use of pipes, using suitable tie-rods or bolts, permitting the construction of directional and speed controls for work actuators.

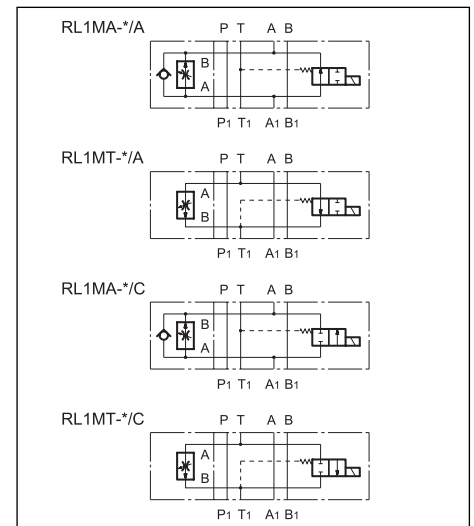
CONFIGURATIONS (see Hydraulic symbols table)

- Configuration "A": meter out control from the actuator on chamber A.
- Configuration "T": control on discharge T of the directional solenoid valve for speed control in both directions of movement.

PERFORMANCE RATINGS (measured with mineral oil of viscosity 36cSt at 50°C)

Maximum operating pressure	bar	250
Maximum flow rate in the controlled lines	l/min	1-4-10-16-22-30
Maximum flow rate in the free lines	l/min	65
Minimum controlled flow rate	l/min	0,08
Ambient temperature range	°C	-20 ÷ +50
Fluid temperature range	°C	-20 ÷ +80
Fluid viscosity range	cSt	10 ÷ 400
Recommended viscosity	cSt	25
Degree of fluid contamination	According to NAS 1638 class 10	
Mass	kg	3

HYDRAULIC SYMBOLS





1 - IDENTIFICATION CODE

	R	L	1	M	-	/	/	21	/	/	/	
--	----------	----------	----------	----------	----------	----------	----------	-----------	----------	----------	----------	--

Electric fast/slow speed selection valve

CETOP 03 size

Modular version

Adjustments:
A = adjustment on chamber A of the actuator;
T = adjustment on discharge T of the directional solenoid valve

Flow adjustment range:
1 = 1 l/min **16** = 16 l/min
4 = 4 l/min **22** = 22 l/min
10 = 10 l/min **30** = 30 l/min

CM = Manual override, boot protected (omit if not required)

Seals: omit for mineral oils
V = viton for special fluids

Electrical features (voltage and frequency) (see catalogue 41 200, par. 6.2)

Series No. (the overall and mounting dimensions remain unchanged from 20 to 29)

A = normally open solenoid valve
C = normally closed solenoid valve

NOTE : for more information regarding the flow control valve, see catalogue 32 200

NOTE: The solenoid valves are never supplied with connector. Connectors must be ordered separately. For the identification of the connector type to be ordered, please see catalogue 49 000.

2 - HYDRAULIC FLUIDS

Use mineral oil-based hydraulic fluids, with the addition of suitable anti-frothing and anti-oxidizing agents. For the use of other types (water glycol, phosphate esters and others), please consult our technical department.

3 - OVERALL AND MOUNTING DIMENSIONS

dimensions in mm

1	Mounting surface with sealing rings: 4 OR type 2037
2	Adjustment knob. Rotate anticlockwise to increase flow.
3	Coil removal space
4	Connector removal space
5	Knob locking screw.

	<p>DIPLOMATIC OLEODINAMICA SpA 20025 LEGNANO (MI) - P.le Bozzi, 1 / Via Edison Tel. 0331/472111 - Fax 0331/548328</p>
--	--