



DIPLOMATIC
HYDRAULICS

65 300/104 ED



VR4M

DIRECT CHECK VALVE

SERIES 50

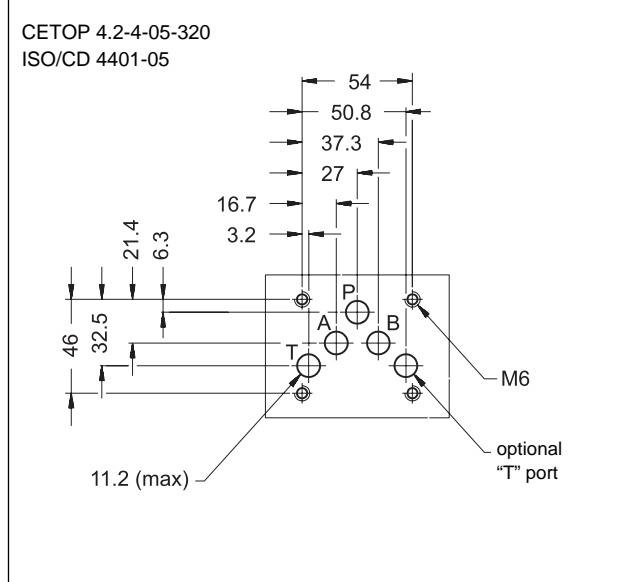
MODULAR VERSION

CETOP 05

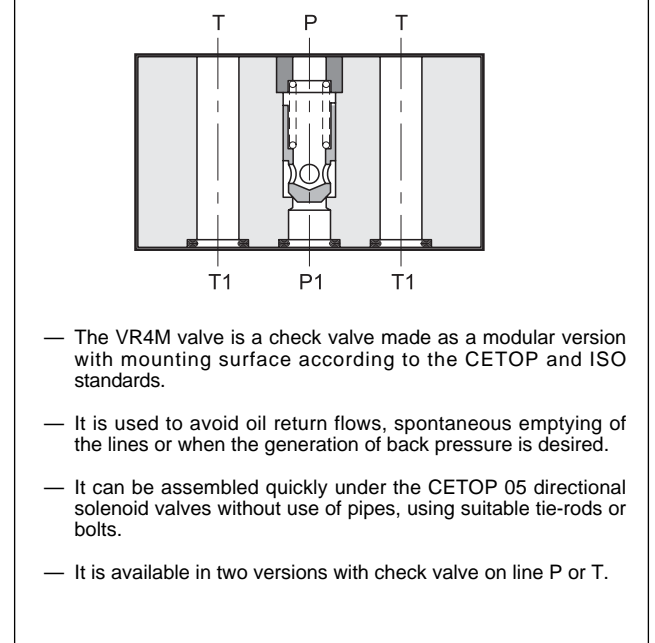
p max 320 bar

Q max 100 l/min

MOUNTING INTERFACE



OPERATING PRINCIPLE



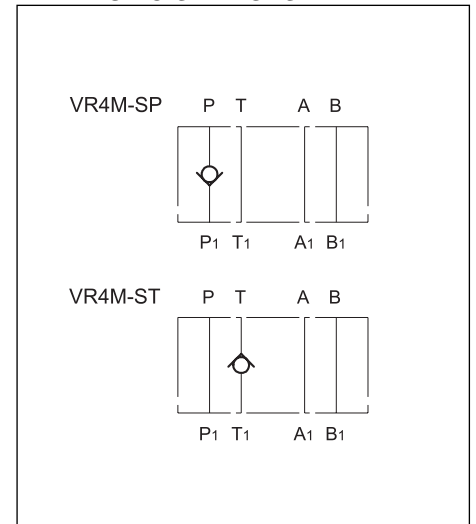
CONFIGURATIONS (see Hydraulic symbols table)

- VR4M-SP: check valve on line P.
- VR4M-ST: check valve on line T.

PERFORMANCE RATINGS (measured with mineral oil of viscosity 36cSt at 50°C)

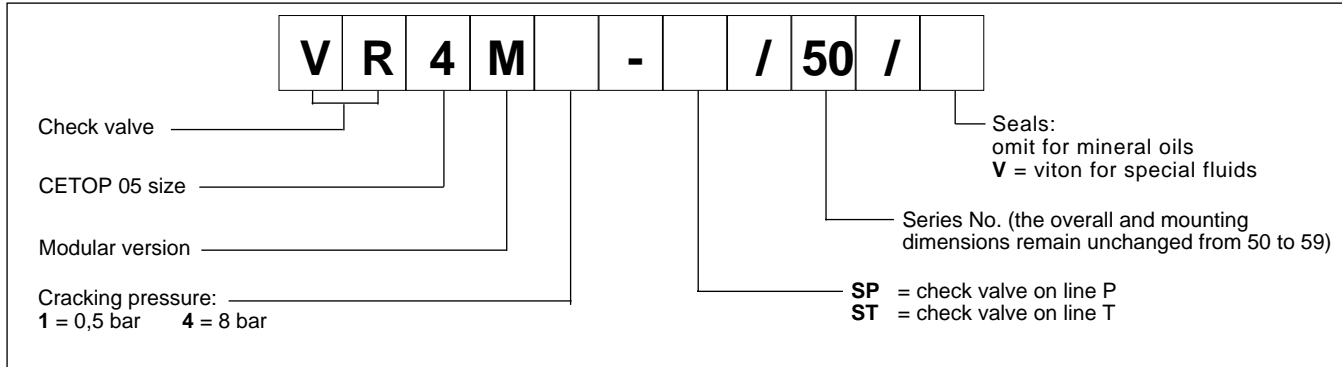
Maximum operating pressure	bar	320
Check valve cracking pressure	bar	0,5 - 8
Maximum flow rate in the controlled lines and in the free lines	l/min	100
Ambient temperature range	°C	-20 ÷ +50
Fluid temperature range	°C	-20 ÷ +80
Fluid viscosity range	cSt	10 ÷ 400
Recommended viscosity	cSt	25
Degree of fluid contamination	According to NAS 1638 class 10	
Mass	kg	2,3

HYDRAULIC SYMBOLS

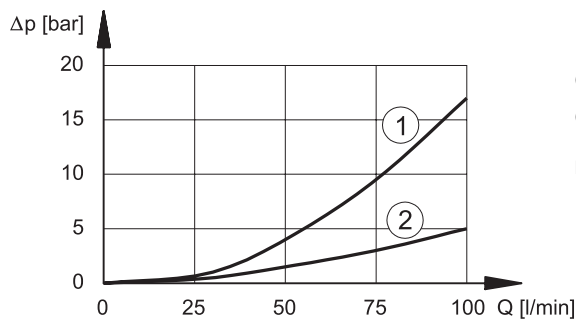




1 - IDENTIFICATION CODE



2 - CHARACTERISTIC CURVES (values obtained with viscosity of 36 cSt at 50°C)



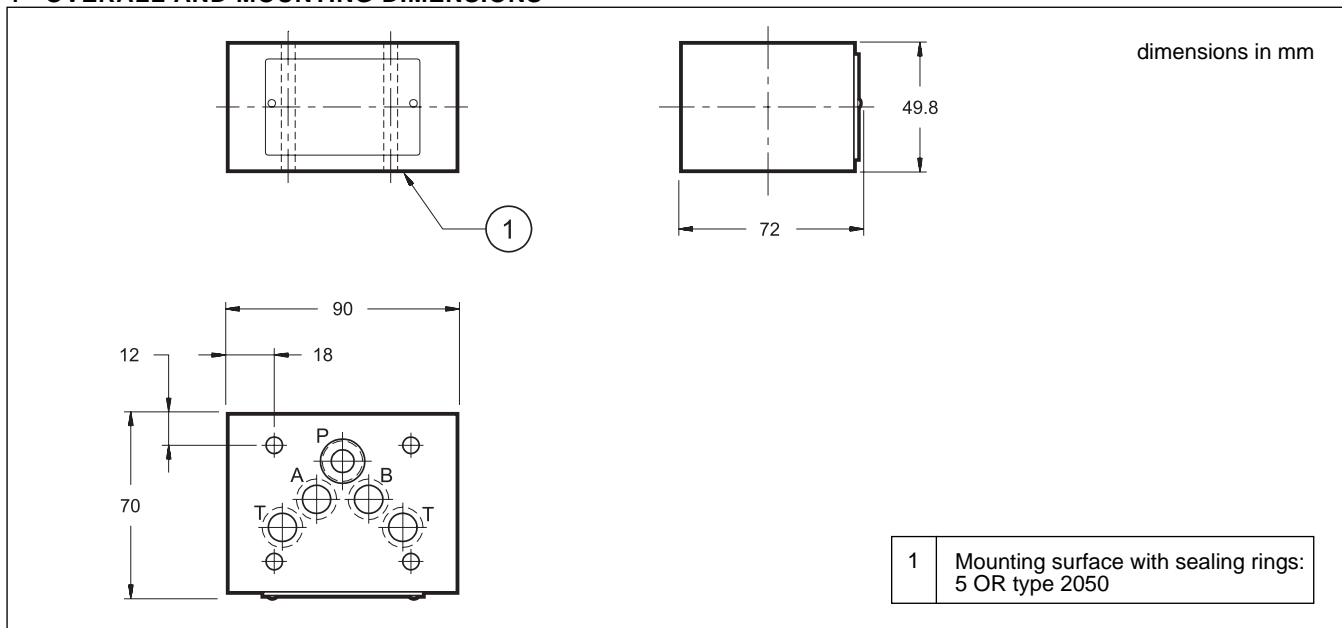
- ① pressure drops $P_1 \rightarrow P$ and $T \rightarrow T_1$ (controlled lines)
- ② pressure drops on free lines (ex. $A \rightarrow A_1$)

NOTE: Add the valve cracking pressure to the values shown by the curve ① of the diagram

3 - HYDRAULIC FLUIDS

Use mineral oil-based hydraulic fluids, with the addition of suitable anti-frothing and anti-oxidizing agents. For the use of other types (water glycol, phosphate esters and others), please consult our technical department.

4 - OVERALL AND MOUNTING DIMENSIONS



DIPLOMATIC OLEODINAMICA SpA
 20025 LEGNANO (MI) - P.le Bozzi, 1 / Via Edison
 Tel. 0331/472111 - Fax 0331/548328