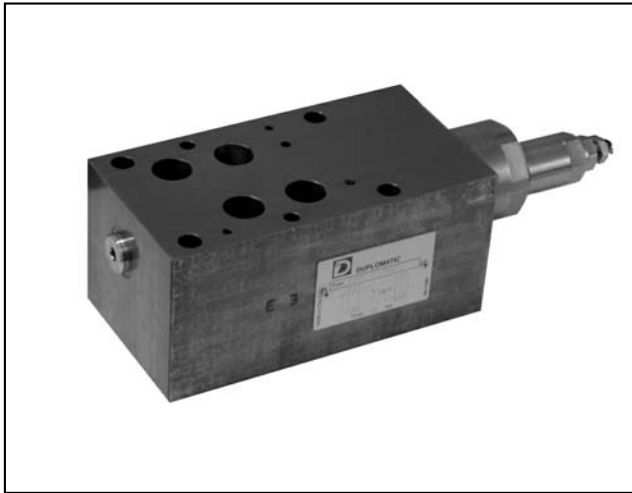




DIPLOMATIC
HYDRAULICS

62 410/102 ED



PZM7

PRESSURE REDUCING VALVE SERIES 10

MODULAR VERSION

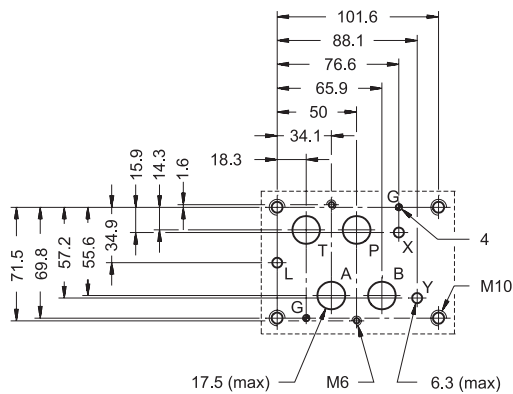
CETOP 07

p max **350** bar

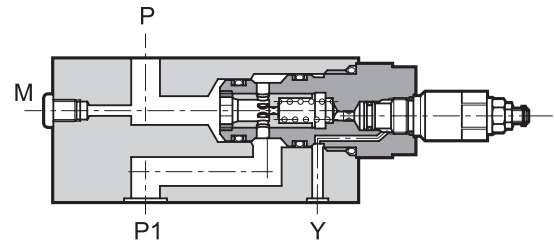
Q max **250** l/min

MOUNTING INTERFACE

CETOP 4.2-4-07



OPERATING PRINCIPLE



- The PZM7 valve is made as a modular valve and has a mounting surface according to the CETOP and ISO standards.
- It is a two-stage type and is used to assure stability of the controlled pressure, even changing the flow that travels through the valve.
- The PZM7M valve can be assembled quickly under the DSP7 directional valves (see catalogue 41 420) without use of pipes, using suitable tie-rods or bolts, forming compact modular groups.
- It is normally supplied with an adjustment knob.

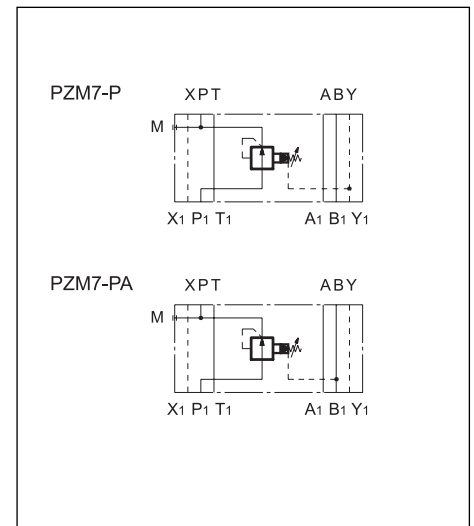
CONFIGURATIONS (see Hydraulic symbols table)

- Configuration "PZM7-P": pressure reduction on line P - external drainage.
- Configuration "PZM7-PA": pressure reduction on line A and valve on line P.

PERFORMANCE RATINGS (measured with mineral oil of viscosity 36cSt at 50°C)

| | | |
|----------------------------|--------------------------------|-----------|
| Maximum operating pressure | bar | 350 |
| Maximum flow rate | l/min | 250 |
| Drainage flow rate | l/min | ≤ 0,8 |
| Ambient temperature range | °C | -20 ÷ +50 |
| Fluid temperature range | °C | -20 ÷ +80 |
| Fluid viscosity range | cSt | 10 ÷ 400 |
| Recommended viscosity | cSt | 25 |
| Fluid contamination degree | According to NAS 1638 class 10 | |
| Mass | kg | 8,65 |

HYDRAULIC SYMBOLS





PZM7

SERIES 10

1 - IDENTIFICATION CODE

| | | | | | | | | |
|----------|----------|----------|----------|----------|--|-------------|----------|--|
| P | Z | M | 7 | - | | / 10 | / | |
|----------|----------|----------|----------|----------|--|-------------|----------|--|

Pressure relief valve ————

Modular version ————

CETOP 07 size ————

S = adjustment screw (standard)
K = adjustment knob

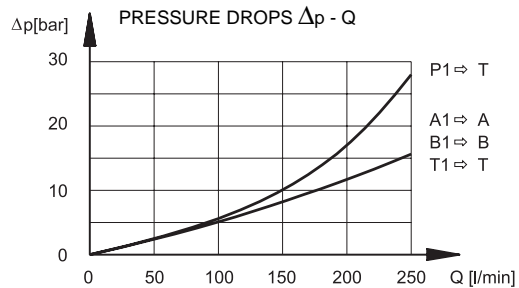
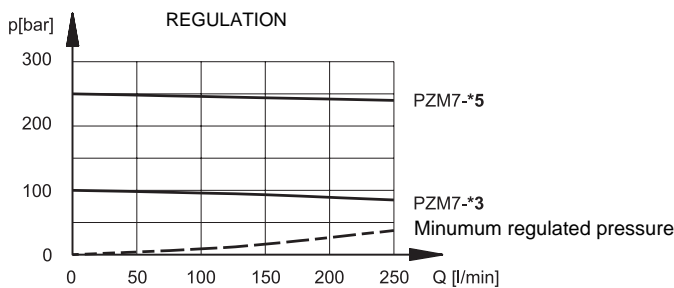
Seals:
N = seals in NBR for mineral oils (standard)
V = seals in FPM for special fluids

Series No. (the overall and mounting dimensions remain unchanged from 10 to 19)

P = Pressure reduction on line P - external drainage
PA = Pressure reduction on line A and valve on line P

Pressure adjustment range:
3 = 15 ÷ 100 bar (18 rpm) **5** = 15 ÷ 250 bar (45 rpm)

2 - CHARACTERISTIC CURVES (values obtained with viscosity of 36 cSt at 50°C)



3 - HYDRAULIC FLUIDS

Use mineral oil-based hydraulic fluids, with the addition of suitable anti-frothing and anti-oxidizing agents. For the use of other types (water glycol, phosphate esters and others), please consult our technical department.

4 - OVERALL AND MOUNTING DIMENSIONS

dimensions in mm

| | |
|---|--|
| 1 | Mounting surface with sealing rings: 4 OR type 3087 2 OR type 2043 |
| 2 | Standard adjustment screw Rotate clockwise to increase pressure |
| 3 | Pressure gauge port 1/4" BSP |
| 4 | Adjustment knob K (optional) Rotate clockwise to increase pressure |



DIPLOMATIC OLEODINAMICA SpA
20025 LEGNANO (MI) - P.le Bozzi, 1 / Via Edison
Tel. 0331/472111-472236 - Fax 0331/548328