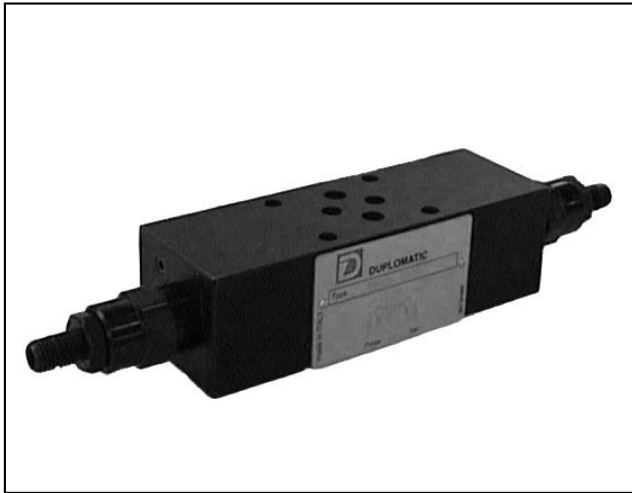




DIPLOMATIC
HYDRAULICS

61 220/104 ED



MRQ

PILOT OPERATED PRESSURE RELIEF VALVE

SERIES 51

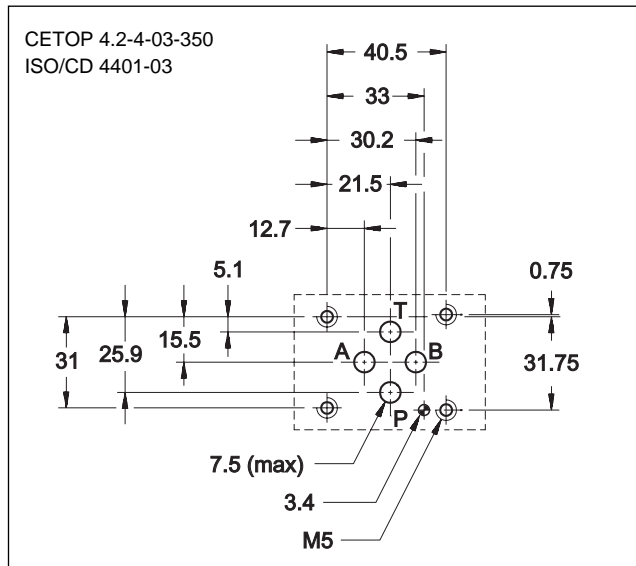
MODULAR VERSION

CETOP 03

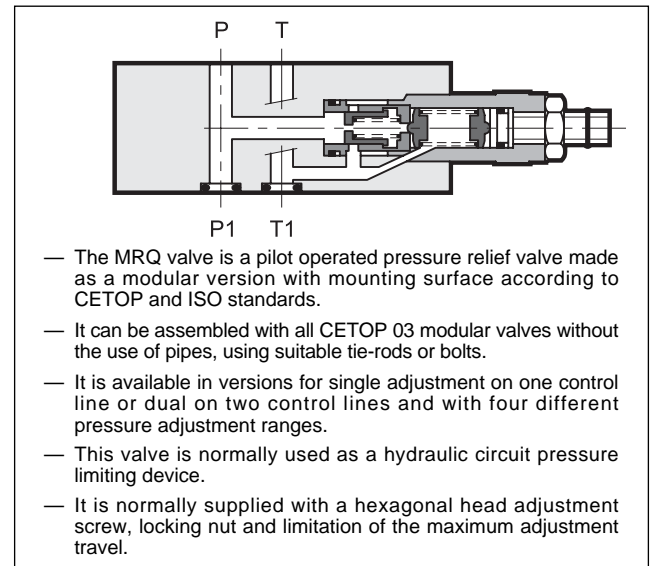
p max **350** bar

Q max **75** l/min

MOUNTING INTERFACE



OPERATING PRINCIPLE



CONFIGURATIONS (see Hydraulic symbols table)

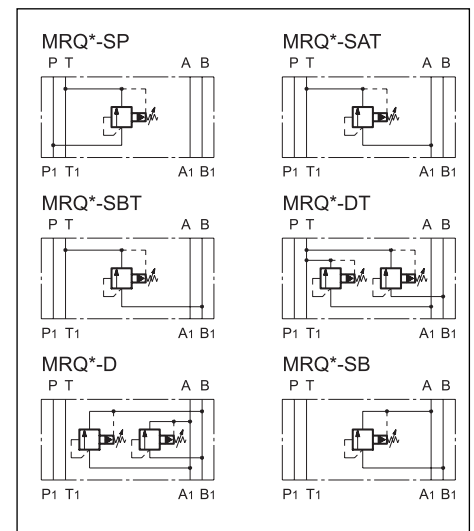
- Configuration "SP": controls the pressure on line P with discharge in T.
- Configuration "SAT": controls the pressure on line A with discharge in T.
- Configuration "SBT": controls the pressure on line B with discharge in T.

- Configuration "DT": controls the pressure on lines A-B with discharge in T.
- Configuration "D": controls the pressure on lines A-B with crossed discharges.
- Configuration "SB": controls the pressure on line B with discharge in A.

PERFORMANCE RATINGS (measured with mineral oil of viscosity 36cSt at 50°C)

Maximum operating pressure	bar	350
Minimum controlled pressure	see $\Delta p - Q$ diagram	
Maximum flow rate in the controlled line and in the free lines	l/min	75
Ambient temperature range	°C	-20 ÷ +50
Fluid temperature range	°C	-20 ÷ +80
Fluid viscosity range	cSt	10 ÷ 400
Recommended viscosity	cSt	25
Degree of fluid contamination	According to NAS 1638 class 10	
Mass: MRQ - SP / MRQ - SAT / MRQ - SBT / MRQ - SB	kg	1,4
MRQ - DT / MRQ - D	kg	2,1

HYDRAULIC SYMBOLS





1 - IDENTIFICATION CODE

	M	R	Q	-	/	/	51	/	
--	----------	----------	----------	----------	----------	----------	-----------	----------	--

CETOP 03 size
Modular version

Pilot operated pressure relief valve

Pressure adjustment range:
3 = up to 70 bar **5** = up to 210 bar
4 = up to 140 bar **6** = up to 350 bar

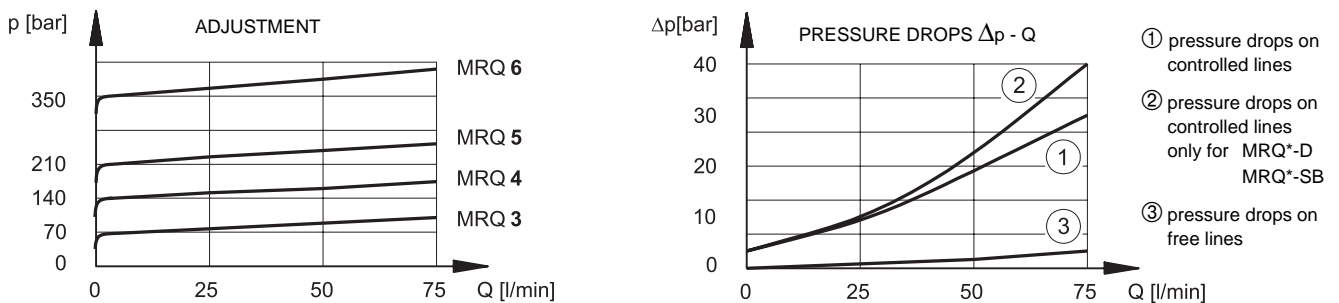
Configurations:
SP: single on line P with discharge in T
SAT: single on line A with discharge in T
SBT: single on line B with discharge in T
DT: double on lines A-B with discharge in T
D: double on lines A-B with crossed discharges
SB: single on line B with discharge in A

Seals:
omit for mineral oils
V = viton for special fluids

Series No. (the overall and mounting dimensions remain unchanged from 50 to 59)

M1 = Adjustment knob
(omit for adjustment with countersunk hex screw)

2 - CHARACTERISTIC CURVES (values obtained with viscosity of 36 cSt at 50°C)



3 - HYDRAULIC FLUIDS

Use mineral oil-based hydraulic fluids, with the addition of suitable anti-frothing and anti-oxidizing agents. For the use of other types (water glycol, phosphate esters and others), please consult our technical department.

4 - OVERALL AND MOUNTING DIMENSIONS

dimensions in mm

1	Locking nut: spanner 17
2	Countersunk hex adjustment screw: spanner 5 Rotate clockwise to increase pressure
3	Mounting surface with sealing rings: 4 OR type 2037
4	Adjustment knob: M1



DIPLOMATIC OLEODINAMICA SpA
 20025 LEGNANO (MI) - P.le Bozzi, 1 / Via Edison
 Tel. 0331/472111 - Fax 0331/548328