



DIPLOMATIC
HYDRAULICS

RM4*-MP

SUBPLATE WITH PRESSURE RELIEF VALVE

SERIES 30

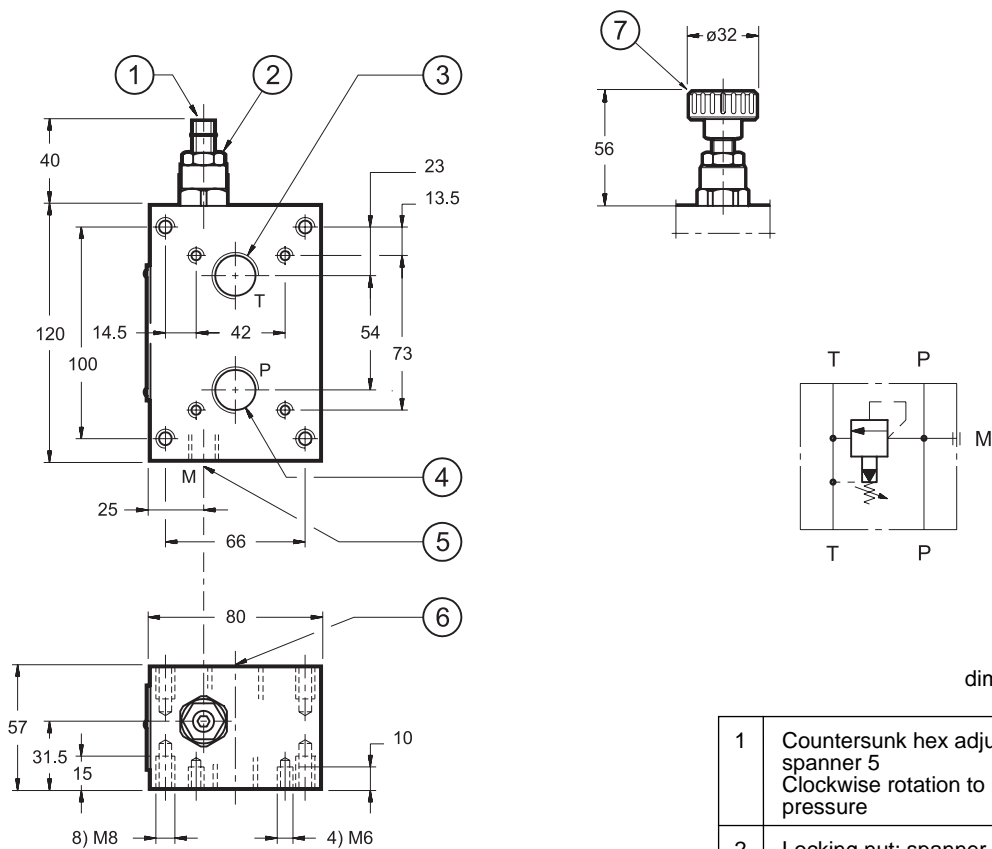
- The RM4*-MP subplate includes a pressure relief valve with P and T threaded ports.
- It is used as mounting surface for P2D and P4D subplates on power packs.
- It is available in four pressure adjustment ranges up to 350 bar.
- It is normally supplied with a countersunk hex adjustment screw, locking nut and maximum adjustment limiting device.

THREADED PORTS

p max 350 bar

Q max 100 l/min

1 - OVERALL AND MOUNTING DIMENSIONS



dimensions in mm

Mass: Kg. 3,8

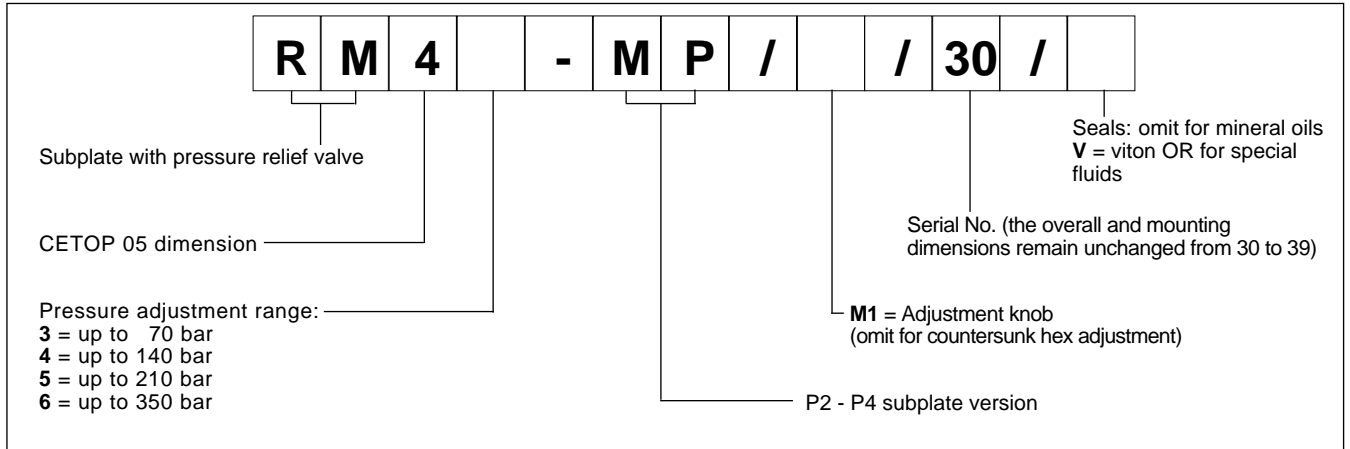
1	Countersunk hex adjustment screw: spanner 5 Clockwise rotation to increase pressure
2	Locking nut: spanner 17
3	Tank port 1/2" BSP
4	Pressure port 1/2" BSP
5	Pressure gauge port 1/4" BSP
6	Tank port 3/4" BSP
7	Adjustment knob



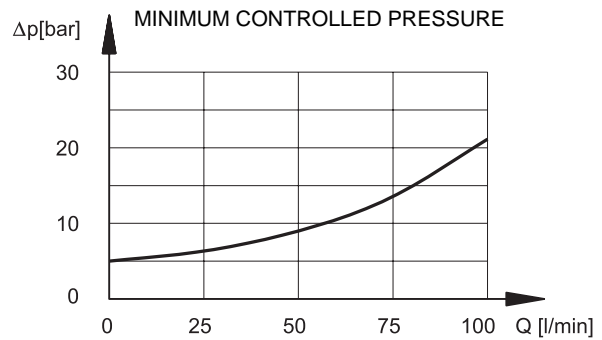
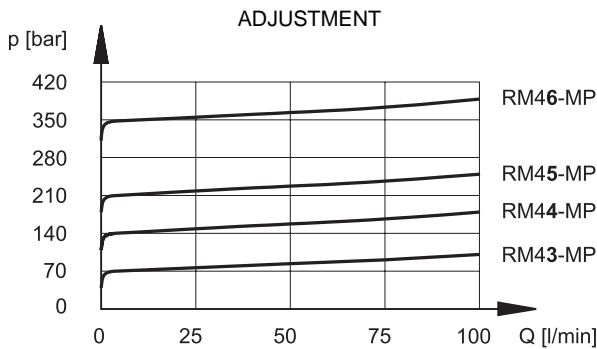
RM4*-MP

SERIES 30

1 - IDENTIFICATION CODE



2 - CHARACTERISTIC CURVES (values obtained with viscosity of 36 cSt at 50°C)



3 - HYDRAULIC FLUIDS

Use mineral oil-based hydraulic fluids, with the addition of suitable anti-frothing and anti-oxidizing agents.
 For the use of other types (water glycol, phosphate esters and others), please consult our technical department.

 DIPLOMATIC HYDRAULICS	<p>DIPLOMATIC OLEODINAMICA SpA 20025 LEGNANO (MI) - P.le Bozzi, 1 / Via Edison Tel. 0331/472111-472236 - Fax 0331/548328</p>
--	---