

DT03

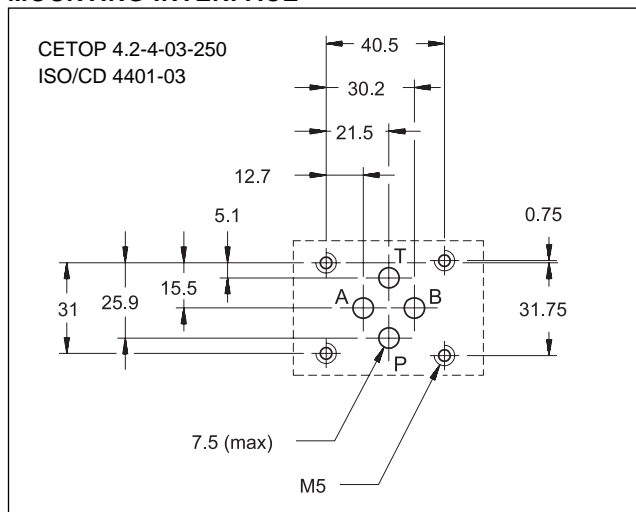
**POPPET TYPE
SOLENOID OPERATED
DIRECTIONAL CONTROL VALVE
SERIES 10**

CETOP 03

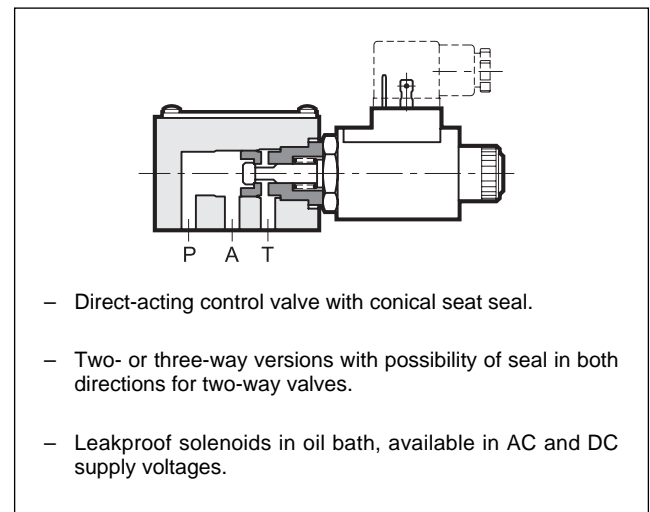
p max 250 bar

Q max 25 l/min

MOUNTING INTERFACE



SUBPLATE MOUNTING



CONFIGURATIONS (see Hydraulic symbols table)

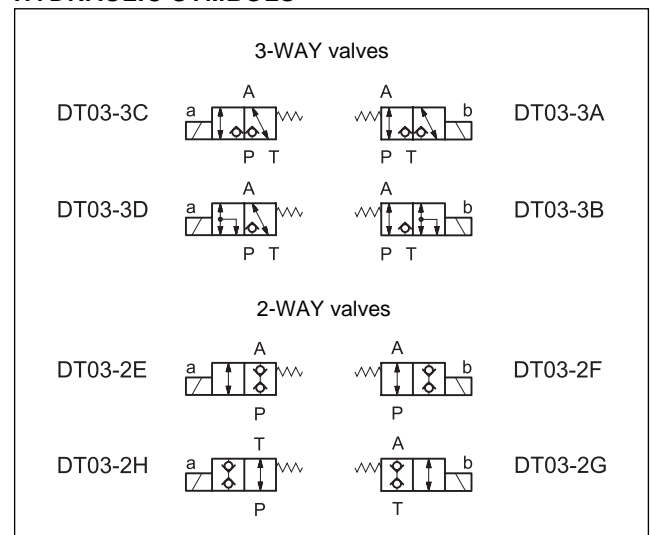
- Configurations "A", "B", "C", "D": 3-way, 2-position solenoid valves.
- Configurations "E", "F", "G", "H": 2-way, 2-position solenoid valves.

PERFORMANCE RATINGS

(working with mineral oil of viscosity of 36 cSt at 50°C)

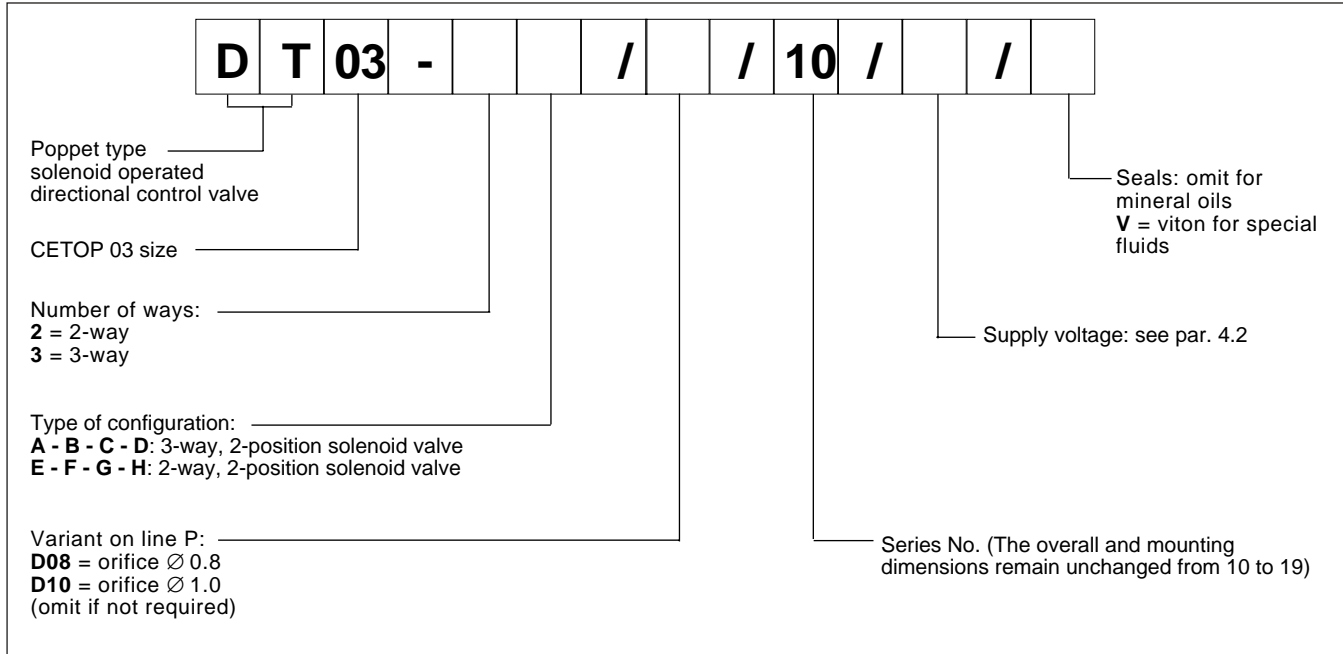
Maximum operating pressure	bar	250
Maximum flow rate	l/min	25
Ambient temperature range	°C	-20 ÷ +50
Fluid temperature range	°C	-20 ÷ +70
Fluid viscosity range	cSt	2,8 ÷ 380
Recommended filtration	µm absolute	≤ 25
Recommended viscosity	cSt	25
Mass	kg	1,3

HYDRAULIC SYMBOLS

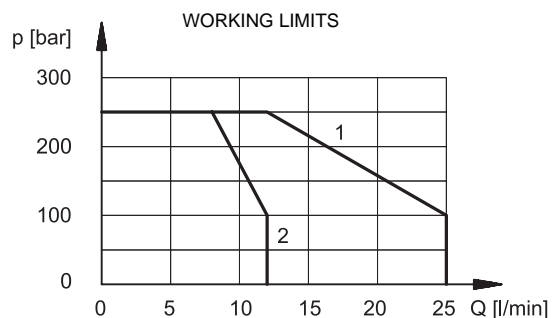
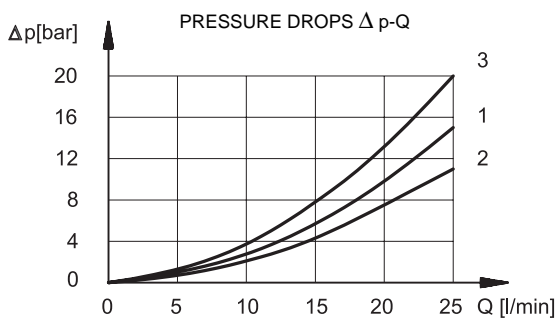




1 - IDENTIFICATION CODE



2 - CHARACTERISTIC CURVES (values obtained with viscosity 36 cSt at 50 °C)



Valve code	De-energized solenoid	Energized solenoid
	Curve on the graph	
DT03-3A	1	3
DT03-3B	2	3
DT03-3C	1	3
DT03-3D	2	3
DT03-2E	-	3
DT03-2F	1	-
DT03-2G	-	3
DT03-2H	1	-

Valve code	Curve on the graph
DT03-3A	2
DT03-3B	1
DT03-3C	1
DT03-3D	1
DT03-2E	1
DT03-2F	2
DT03-2G	1
DT03-2H	1

3 - HYDRAULIC FLUIDS

Use mineral oil-based hydraulic fluids, with the addition of suitable anti-frothing and anti-oxidising agents.
For the use of other fluid types (water glycol, phosphate esters and others), please consult our technical department.



4 - ELECTRICAL FEATURES

4.1 Solenoids

These are essentially made up of two parts: tube and coil. The tube is threaded onto the valve body and includes the armature that moves immersed in oil, without wear. The inner part, in contact with the oil in the return line, ensures heat dissipation. The coil is fastened to the tube by a threaded nut, and can be turned 360° on its axis, compatible with space available. The interchangeability of coils of different voltages is allowed within the same type of supply current: alternating or direct (DC / RAC).

4.2 Available voltages

It is necessary to always use "D" type connectors (with rectifier incorporated) and RAC coils for alternating current supply. Rectified current supply takes place by using a bridge rectifier bridge, externally or fitted within the "D" type connectors, between the alternating current source (24 V or 110 V, /50 or /60 Hz) and the coil.

4.3 Current and power consumption

V	Hz	Current consumption A (± 5%)	Power W (± 5%)
12	DC	2.38	28.8
24	DC	1.19	
24	RAC	1.4	28.8
110	RAC	0.3	
220	RAC	0.15	

4.4 Switching times

The values indicated refer to a flow rate of Q=10 l/min, p=210 bar working with mineral oil at a temperature of 50°C, a viscosity of 36 cSt and supply voltage equal to 90% of the nominal voltage.

SUPPLY VOLTAGE FLUCTUATION	±10% Vnom
DUTY CYCLE	100%
Class of protection according to IEC144 standards: Atmospheric agents Coil insulation Impregnation	IP 65 class H class F

DIRECT CURRENT COILS		
12V DC	24V DC	
RAC COILS		
24V RAC	110V RAC	220V RAC

TIMES (±10%)	ENERGIZING	DE-ENERGIZING
		30 ms

4.5 Electric connectors

The solenoid valves are never supplied with connector.

Connectors must be ordered separately.

For the identification of the connector type to be ordered, please see catalogue 49 000.

5 - OVERALL AND MOUNTING DIMENSIONS

NOTE: The solenoid position here shown is for A-B-F-G versions. For the other versions the solenoid is on the opposite side.

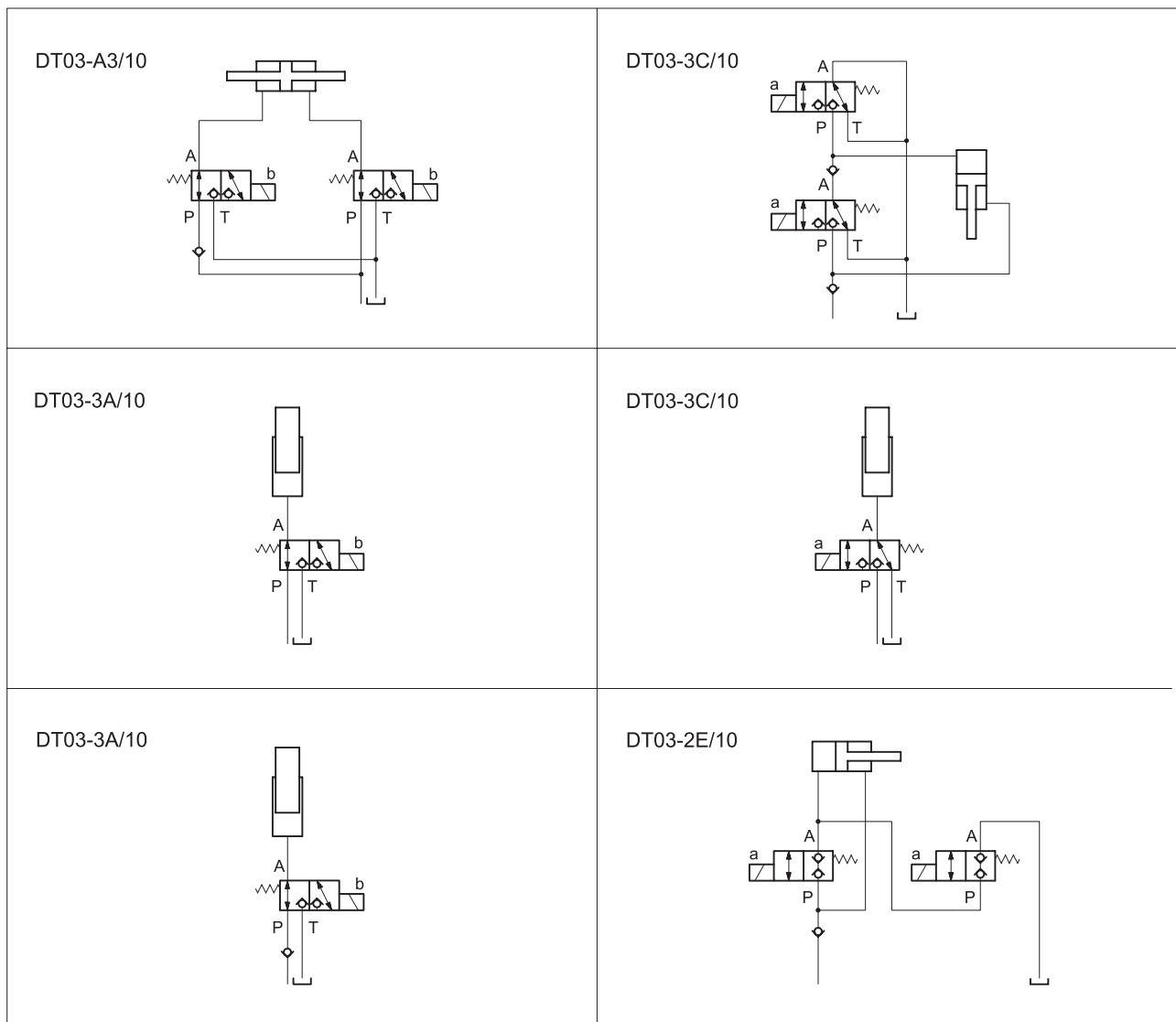
Fastening bolts:
4 bolts M5 x 50
Torque: 5 Nm

1	Manual override
2	Coil removal space
3	Mounting surface with sealing rings: 4 OR type 2037
4	Electric connector to be ordered separately (see cat. 49 000)
5	Connector removal space

dimensions in mm



6 - APPLICATION EXAMPLES



DIPLOMATIC OLEODINAMICA SpA
20025 LEGNANO (MI) - P.le Bozzi, 1 / Via Edison
Tel. 0331/472111-472236 - Fax 0331/548328