



**DIPLOMATIC**  
HYDRAULICS



## K4WA/C

### DECELERATION VALVE

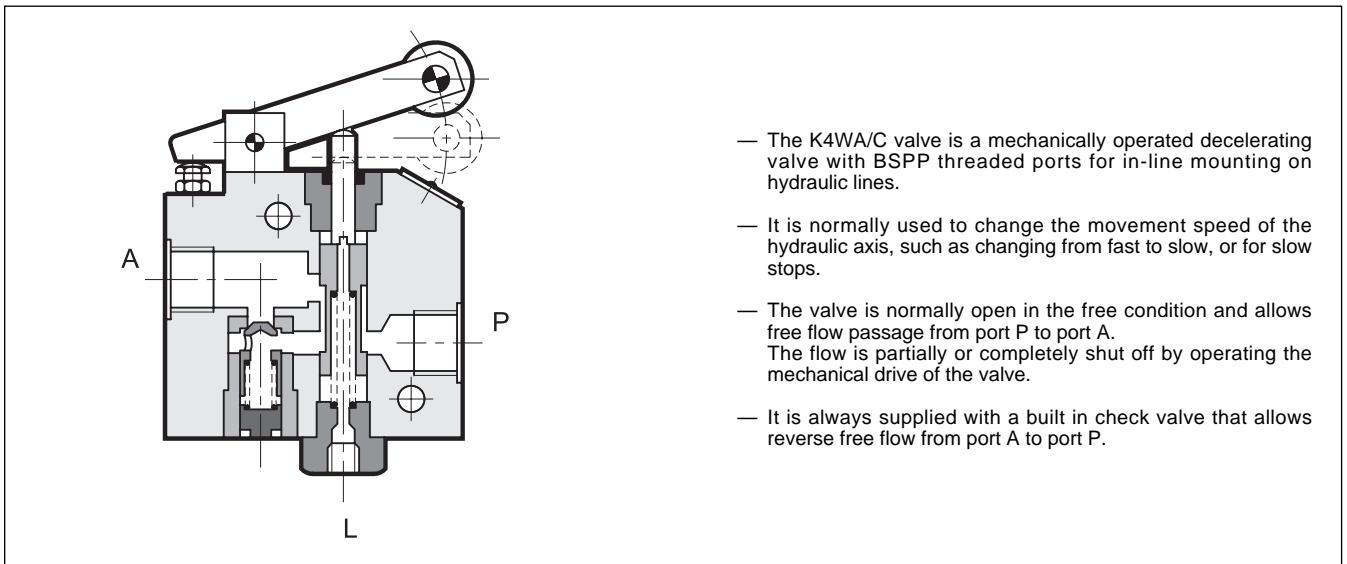
#### SERIES 10

#### THREADED PORTS

**p max 150 bar**

**Q max 40 l/min**

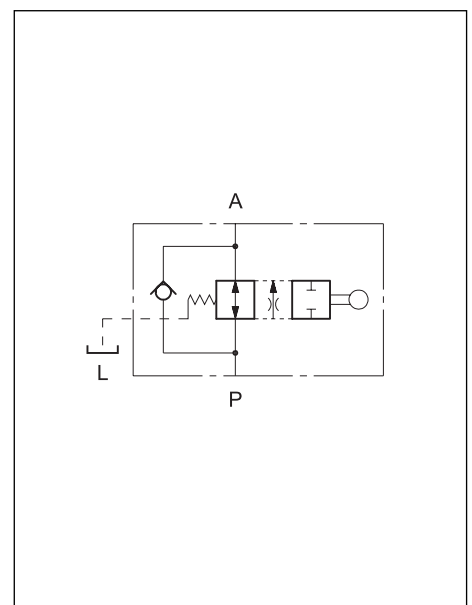
#### OPERATING PRINCIPLE



#### PERFORMANCE RATINGS (obtained with mineral oil with viscosity of 36 cSt at 50°C)

Maximum operating pressure	bar	150
Check valve cracking pressure	bar	0,5
Maximum flow rate	l/min	40
Maximum leakage with valve closed ( $\Delta p$ 100 bar)	l/min	0,05
Adj. travel (from compl. open to compl. closed)	mm	20
Ambient temperature range	°C	-20 ÷ +50
Fluid temperature range	°C	-20 ÷ +70
Fluid viscosity range	cSt	2,8 ÷ 380
Recommended filtration	$\mu\text{m}$ absolute	$\leq 25$
Recommended viscosity	cSt	25
Mass	kg	2,5

#### HYDRAULIC SYMBOL

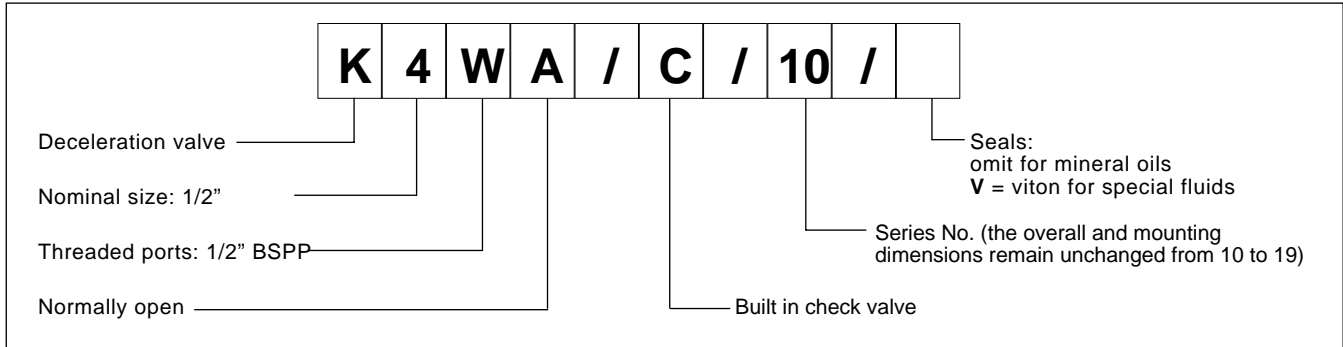




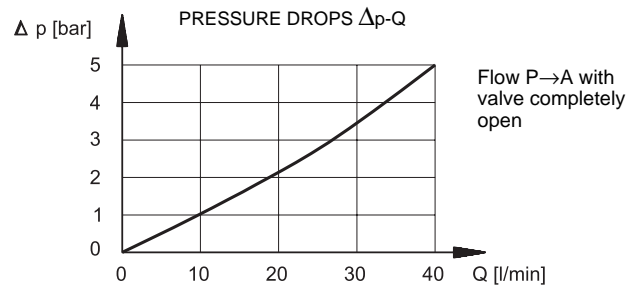
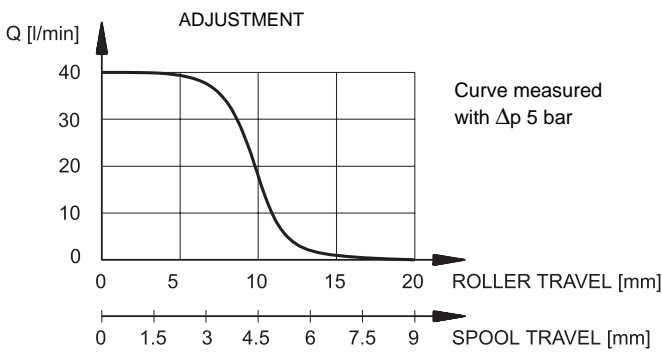
# K4WA/C

## SERIES 10

### 1 - IDENTIFICATION CODE



### 2 - CHARACTERISTIC CURVES (values obtained with viscosity of 36 cSt at 50°C)

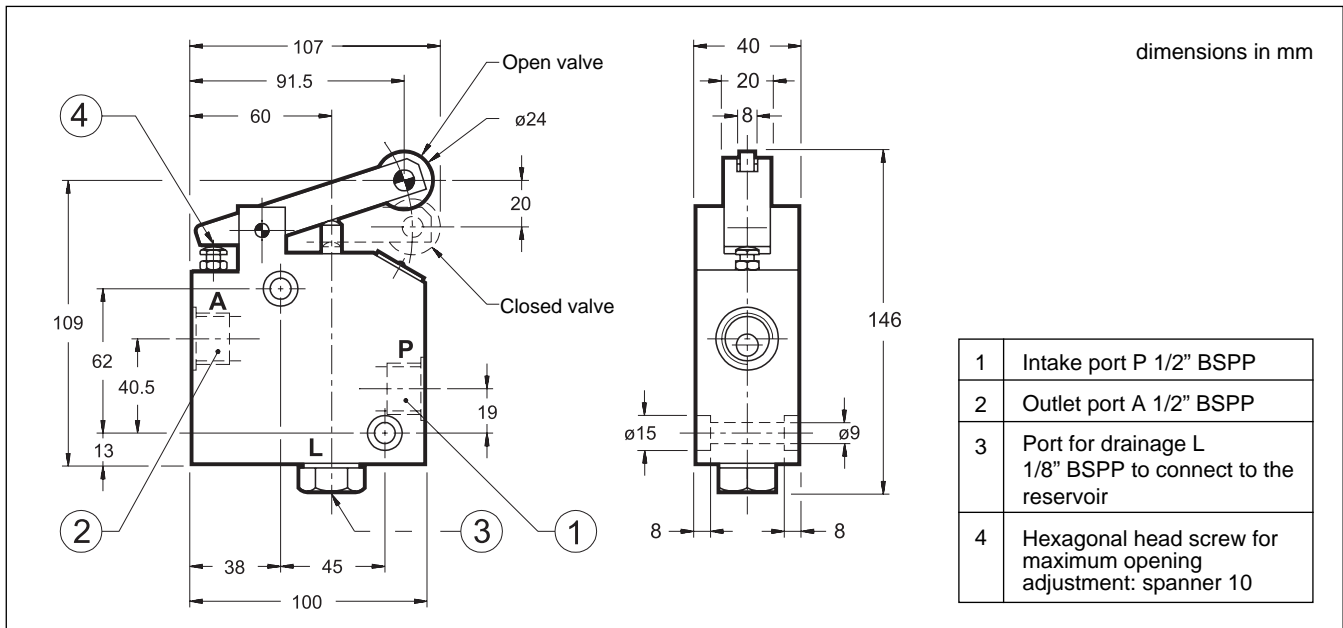


**Note:** For flow A→P, with valve closed, add the cracking pressure (0,5 bar) to the values shown in the diagram.

### 3 - HYDRAULIC FLUIDS

Use mineral oil-based hydraulic fluids, with the addition of suitable anti-frothing and anti-oxidizing agents. For the use of other types (water glycol, phosphate esters and others), please consult our technical department.

### 4 - OVERALL AND MOUNTING DIMENSIONS



**DIPLOMATIC**  
HYDRAULICS

**DIPLOMATIC OLEODINAMICA SpA**

20025 LEGNANO (MI) - P.le Bozzi, 1 / Via Edison  
Tel. 0331/472111-472236 - Fax 0331/548328