



DIPLOMATIC
HYDRAULICS

32 250/197 ED



RPC1-T3

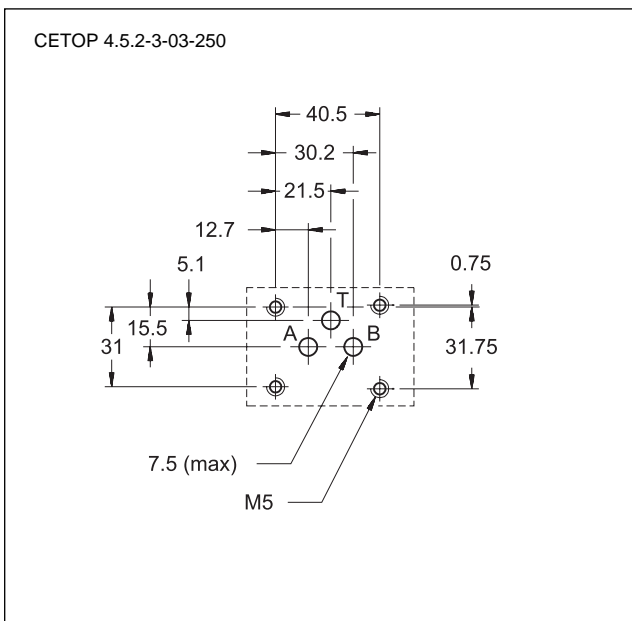
**PRESSURE AND TEMPERATURE
COMPENSATED THREE-WAY
FLOW CONTROL VALVE
SERIES 41**

**SUBPLATE MOUNTING:
CETOP 03**

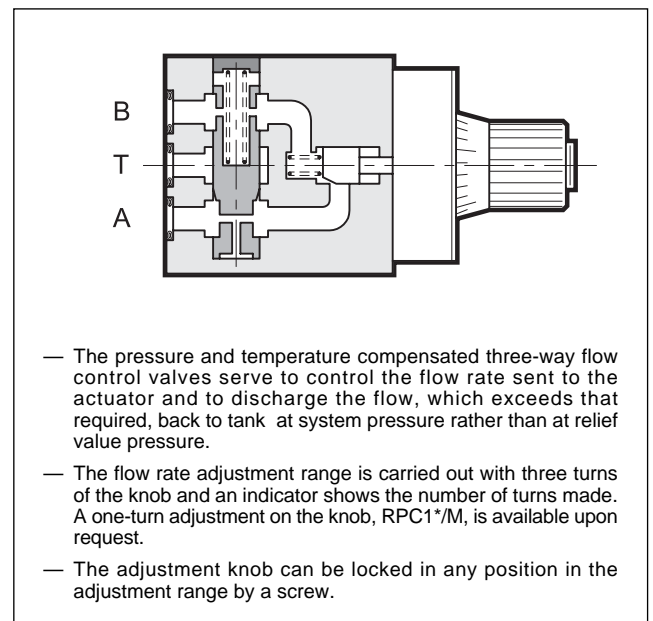
p max 250 bar

Q max (see performance ratings table)

MOUNTING INTERFACE



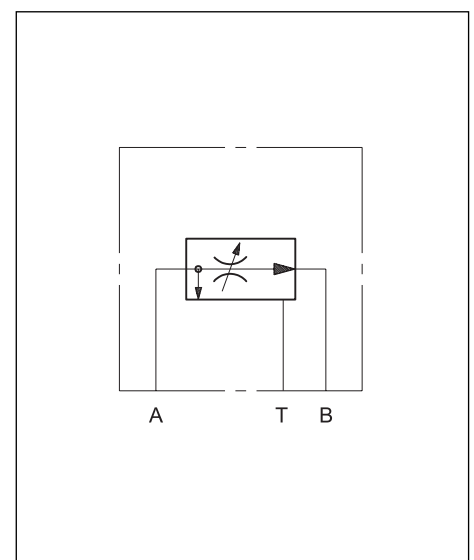
OPERATING PRINCIPLE



PERFORMANCE RATINGS (obtained with mineral oil with viscosity of 36 cSt at 50°C)

Maximum operating pressure	bar	250
Minimum pressure difference between A and B	bar	12
Maximum controlled flow rates	l/min	1-4-10-16-22
Minimum controlled flow rate (for 1 and 4 l/min)	l/min	0,035
Ambient temperature range	°C	-20 ÷ +50
Fluid temperature range	°C	-20 ÷ +70
Fluid viscosity range	cSt	2,8 ÷ 380
Recommended filtration	µm absolute	≤ 25
Filtration recommended for < 0,5 l/min flow rates	µm absolute	≤ 10
Recommended viscosity	cSt	25
Mass	kg	1,5
Number of adjustment knob turns	RPC1-T3	3
	RPC1-T3/M	1

HYDRAULIC SYMBOL

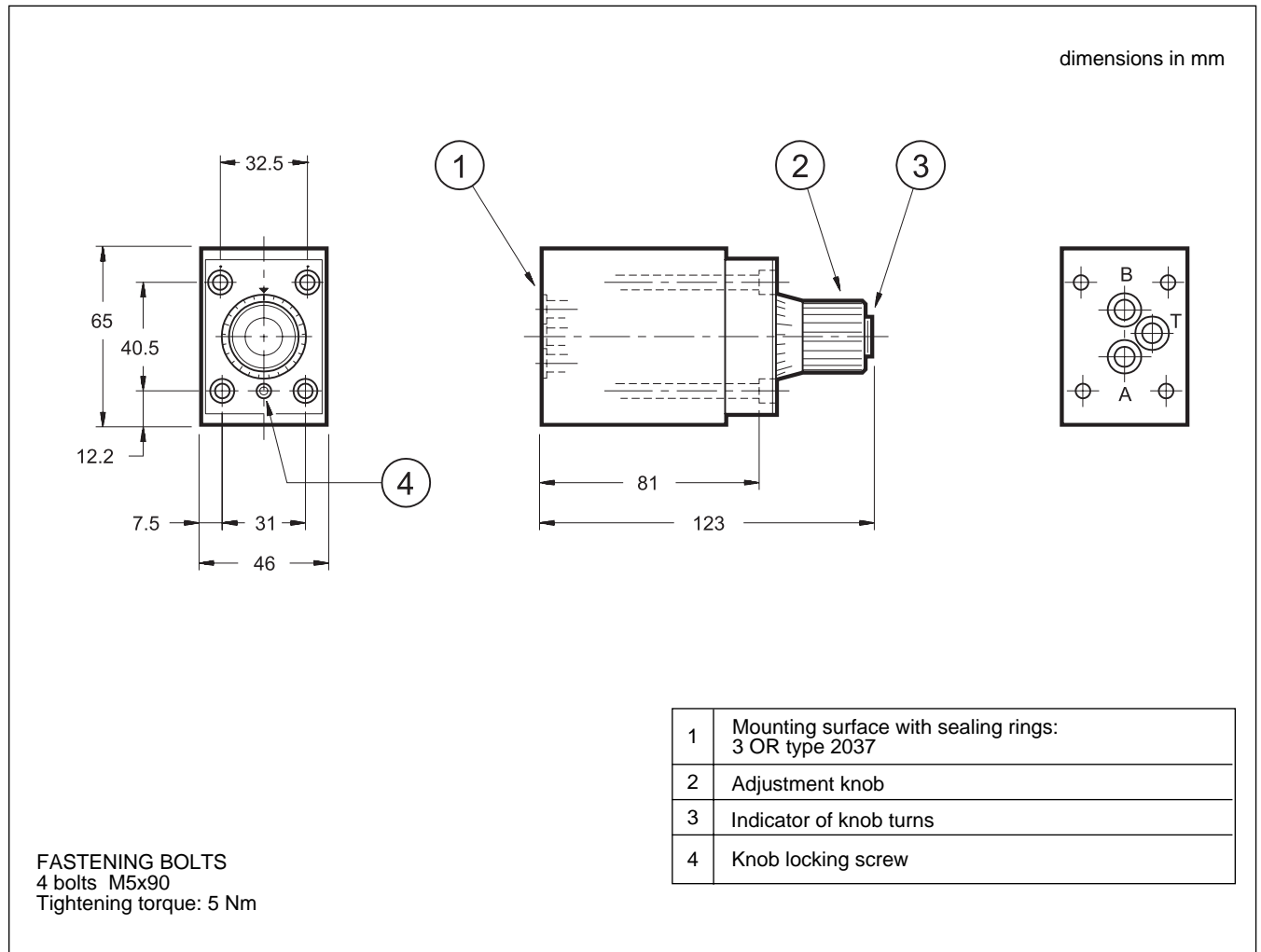




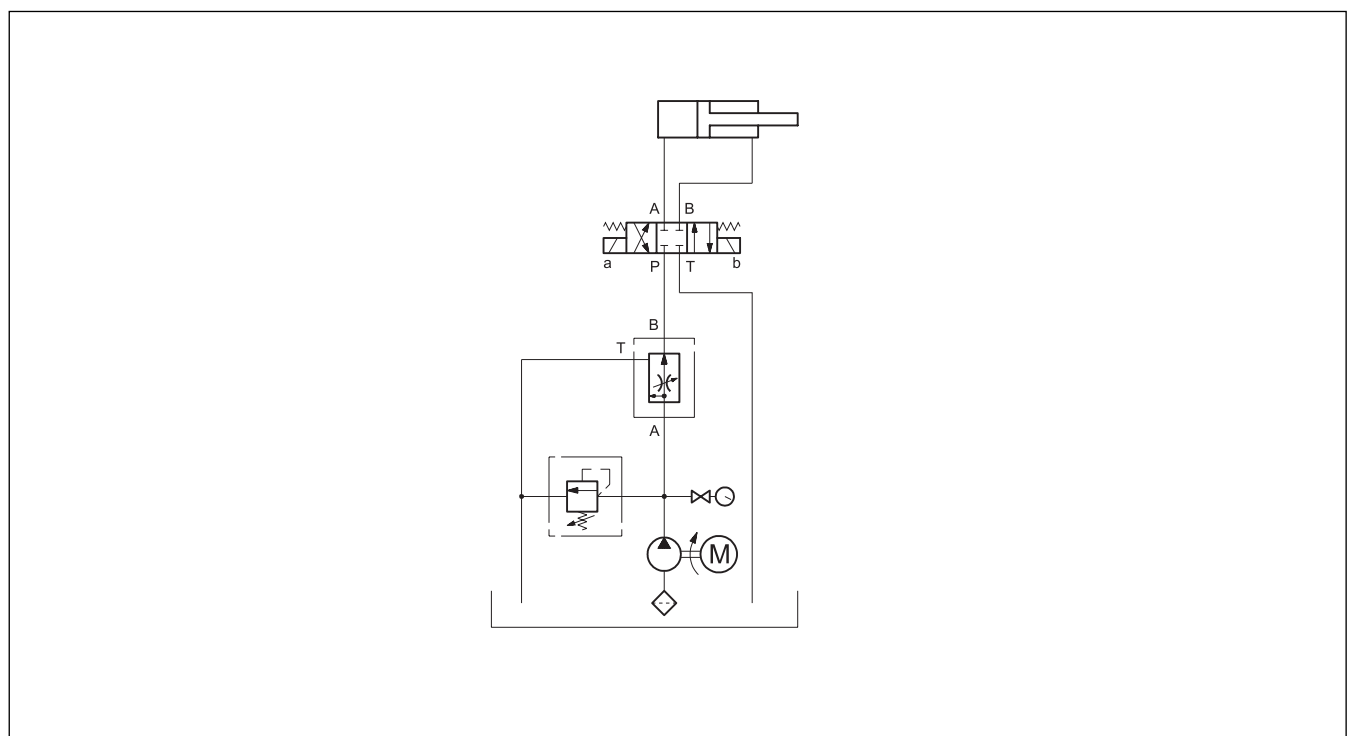
RPC1-T3

SERIES 41

6 - OVERALL AND MOUNTING DIMENSIONS



7 - APPLICATION EXAMPLES





RPC1-T3

SERIES 41

8 - SUBPLATES (see catalogue 51 000)

Type	PMMD-AI3G with rear ports with user P plugged
Type	PMMD-AL3G with side ports with user P plugged
Port dimension	3/8" BSP



DIPLOMATIC
HYDRAULICS

DIPLOMATIC OLEODINAMICA SpA

20025 LEGNANO (MI) - P.le Bozzi, 1 / Via Edison
Tel. 0331/472111-472236 - Fax 0331/548328