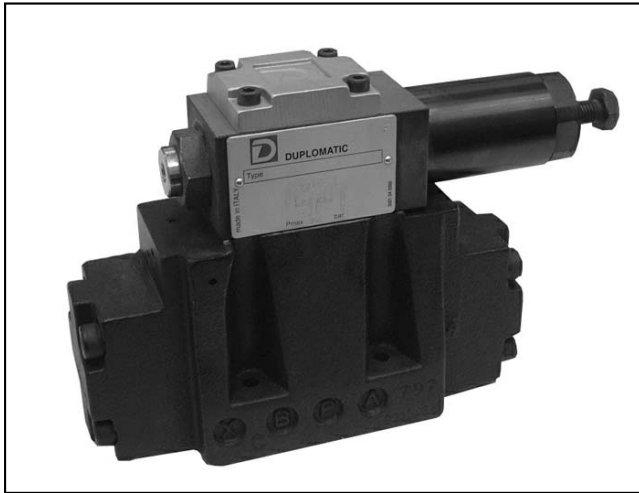




**DIPLOMATIC
HYDRAULICS**

24 300/104 ED



ZC*

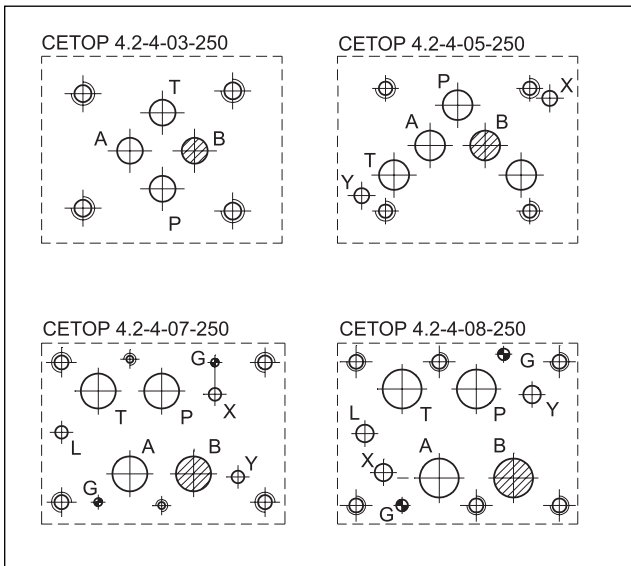
BALANCING VALVES SERIES 51

SUBPLATE MOUNTING

p max 250 bar

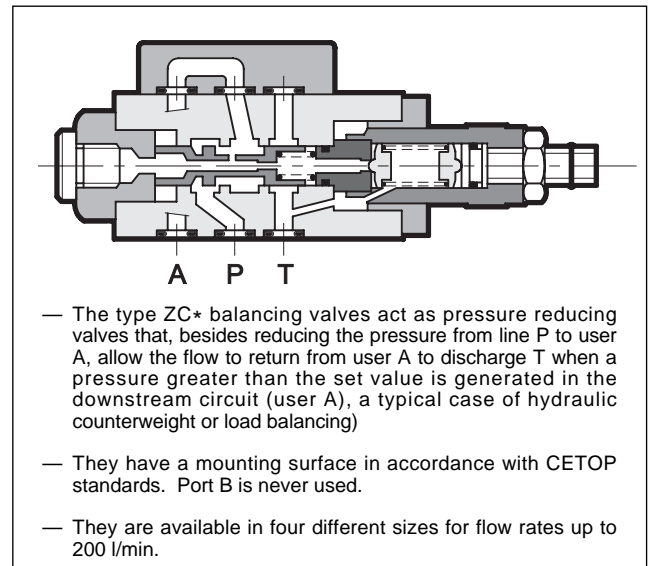
Q max (see performance ratings table)

MOUNTING INTERFACES



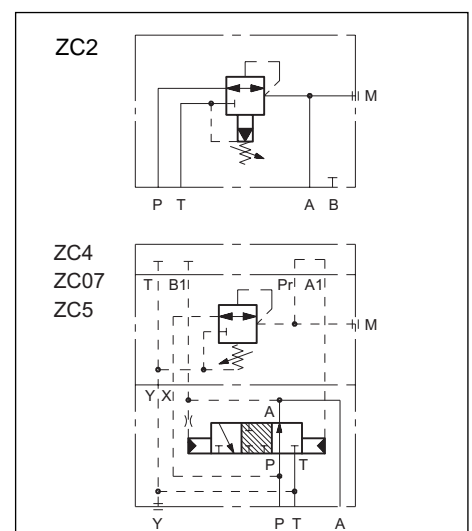
– Ports B - X - Y - L are never used.

OPERATING PRINCIPLE



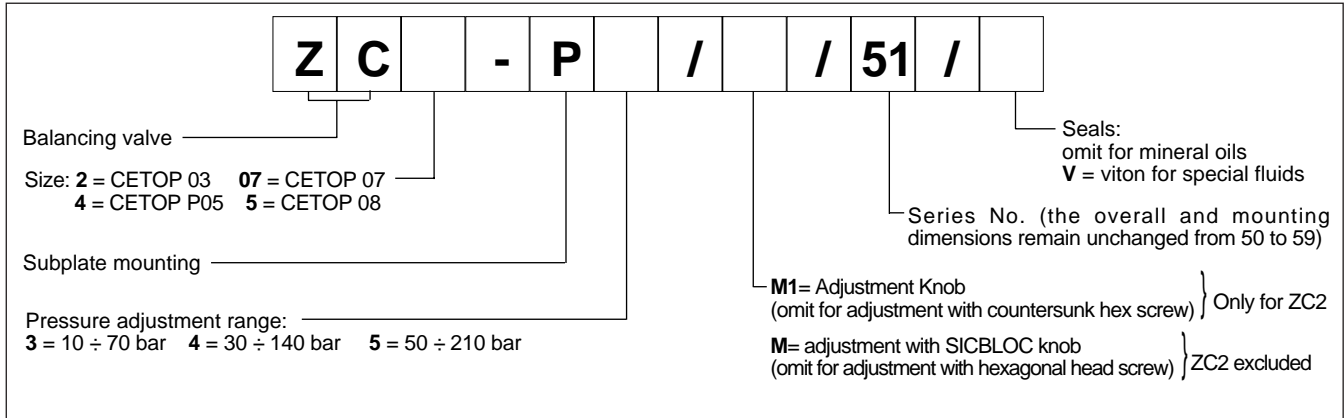
PERFORMANCE RATINGS (measured with mineral oil of viscosity 36 cSt at 50°C)		ZC2	ZC4	ZC07	ZC5
Maximum operating pressure	bar	350	250	250	250
Maximum flow rate	l/min	25	75	125	200
Ambient temperature range	°C	-20 ÷ +50			
Fluid temperature range	°C	-20 ÷ +80			
Fluid viscosity range	cSt	10 ÷ 400			
Recommended viscosity	cSt	25			
Degree of fluid contamination	According to NAS 1638 class 10				
Mass	kg	1,5	6,3	8,5	15,4

HYDRAULIC SYMBOL

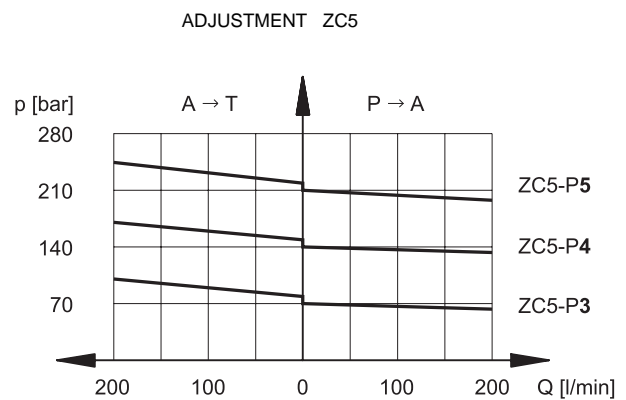
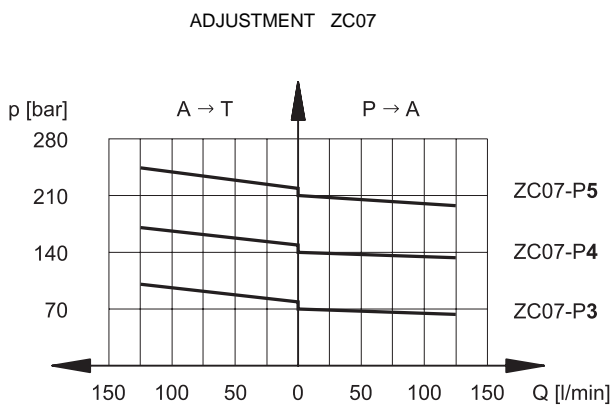
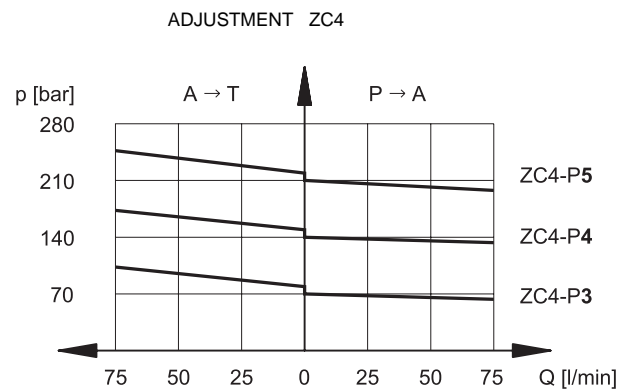
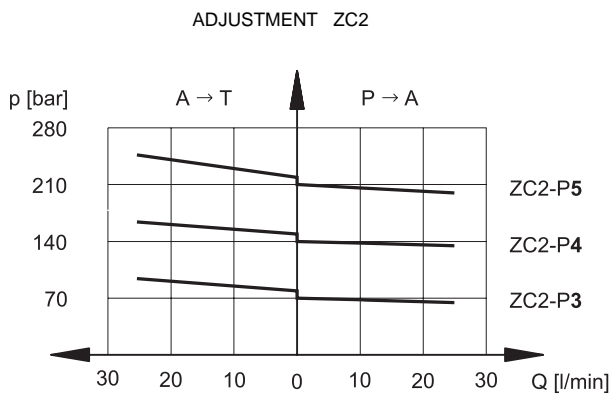




1 - IDENTIFICATION CODE



2 - CHARACTERISTIC CURVES (values obtained with viscosity of 36 cSt at 50°C)

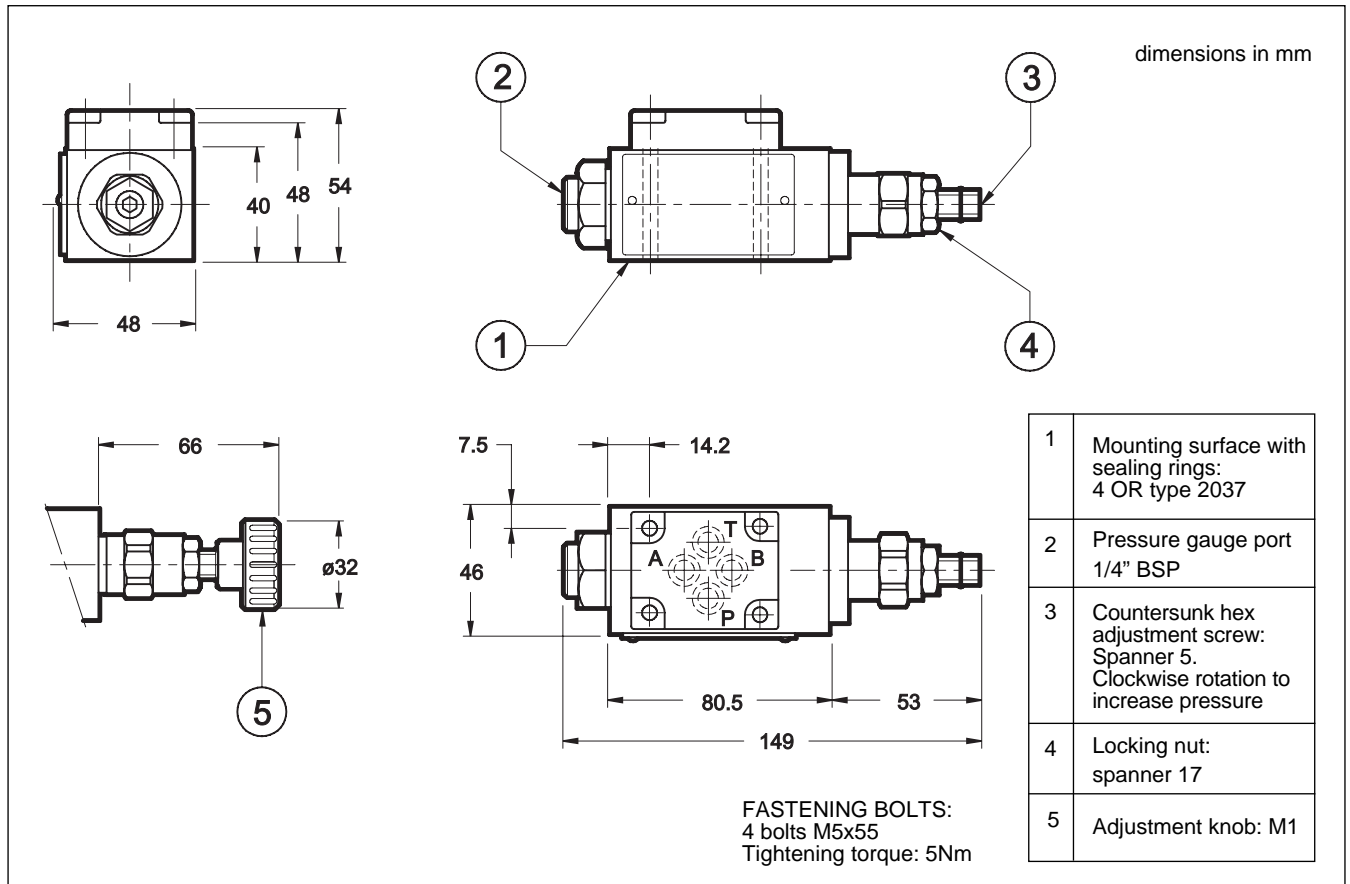


3 - HYDRAULIC FLUIDS

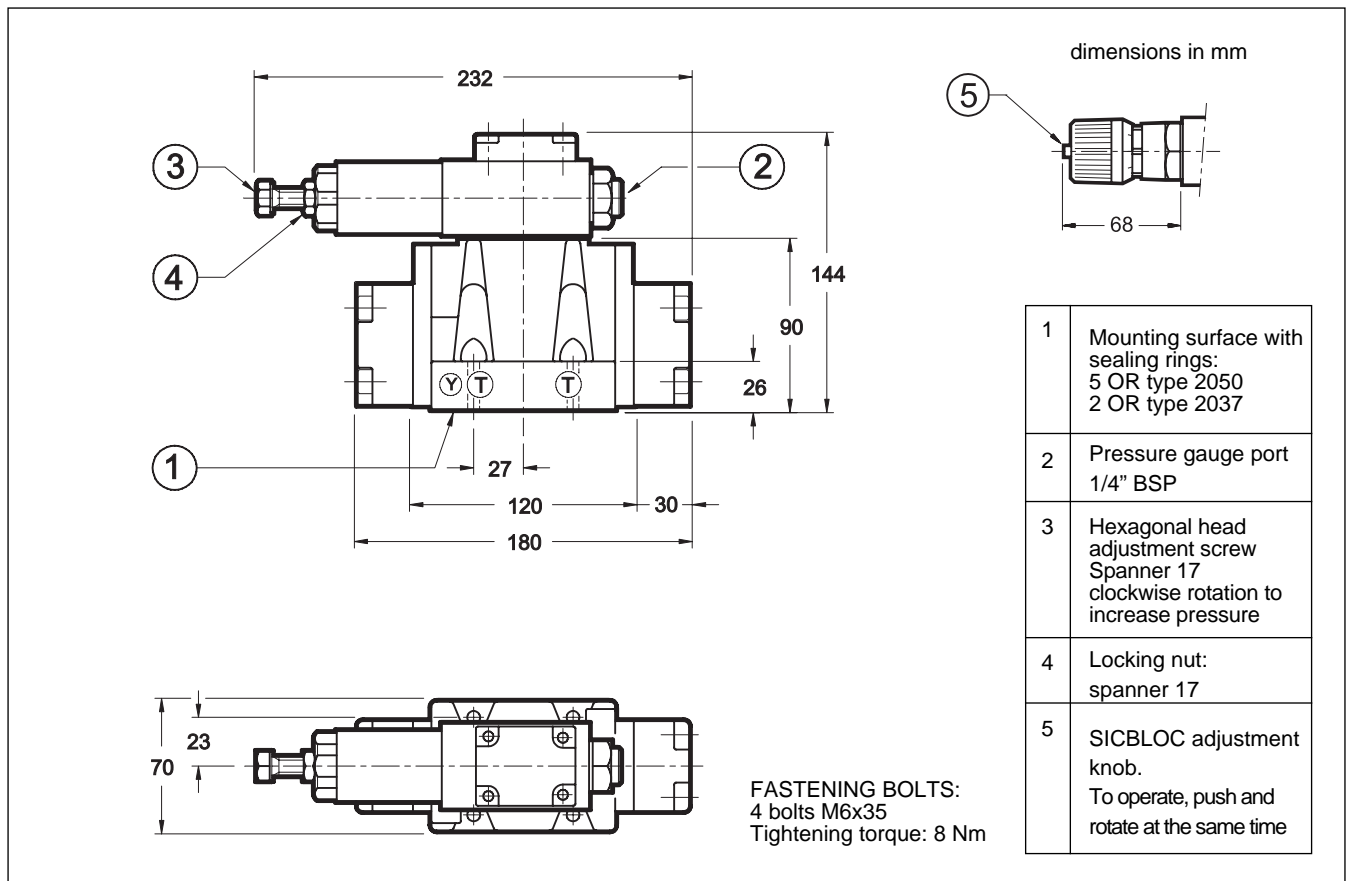
Use mineral oil-based hydraulic fluids, with the addition of suitable anti-frothing and anti-oxidizing agents.
For the use of other types (water glycol, phosphate esters and others), please consult our technical department.



4 - ZC2 OVERALL AND MOUNTING DIMENSIONS

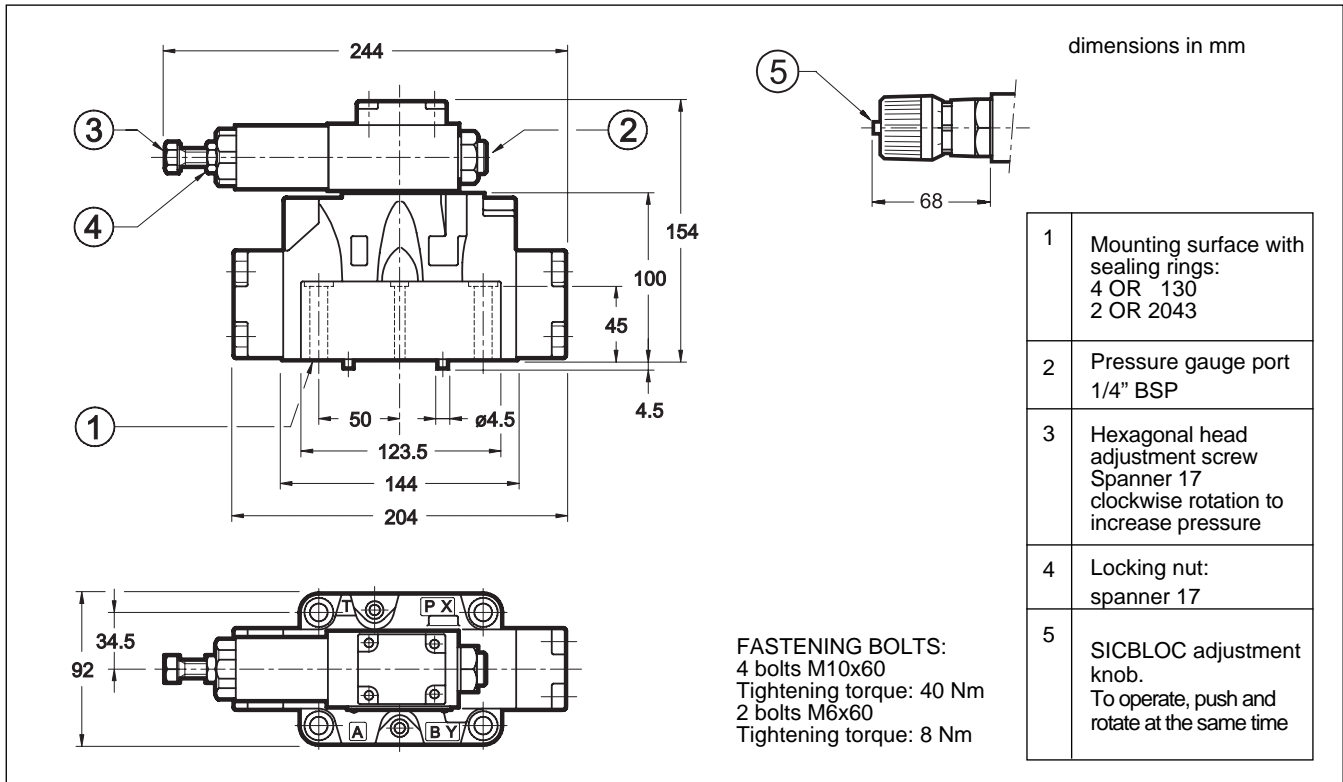


5 - ZC4 OVERALL AND MOUNTING DIMENSIONS

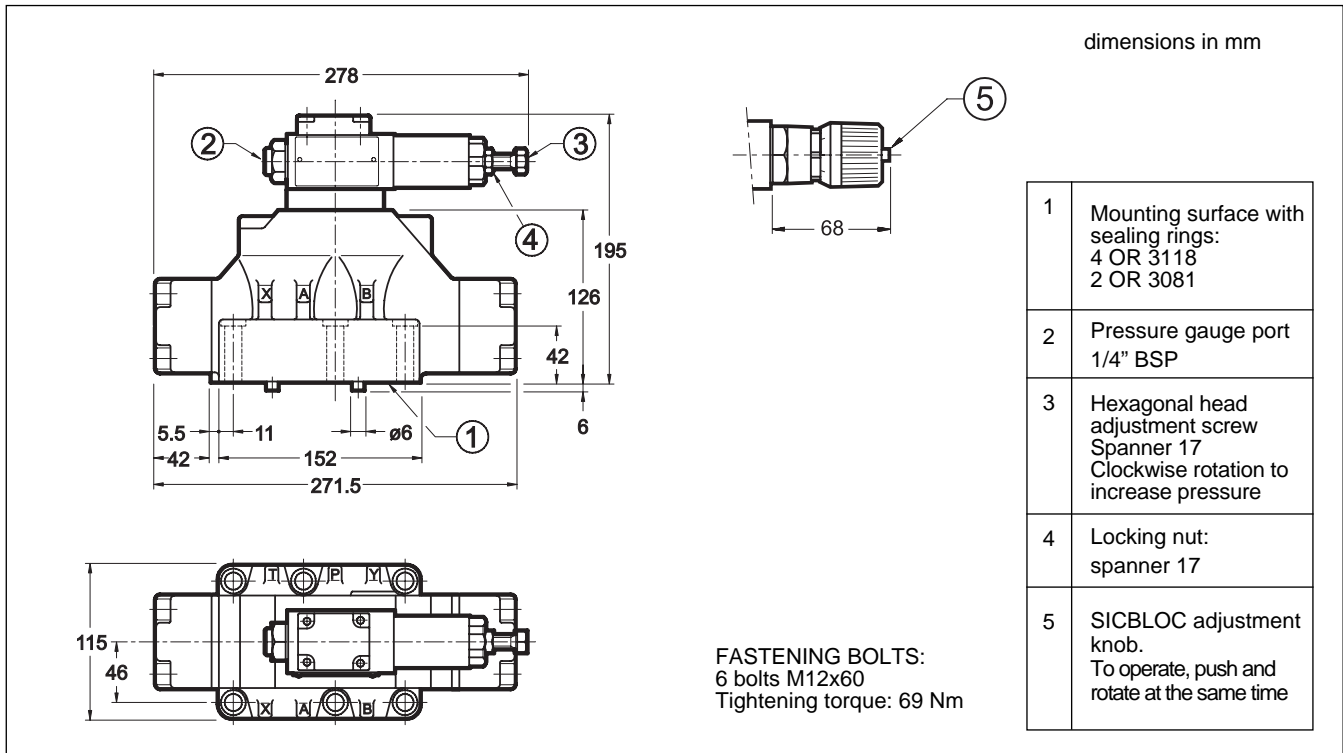




6 - ZC07 OVERALL AND MOUNTING DIMENSIONS



7 - ZC5 OVERALL AND MOUNTING DIMENSIONS



DIPLOMATIC OLEODINAMICA SpA
20025 LEGNANO (MI) - P.le Bozzi, 1 / Via Edison
Tel. 0331/472111 - Fax 0331/548328