



**DIPLOMATIC
HYDRAULICS**

21 410/104 ED



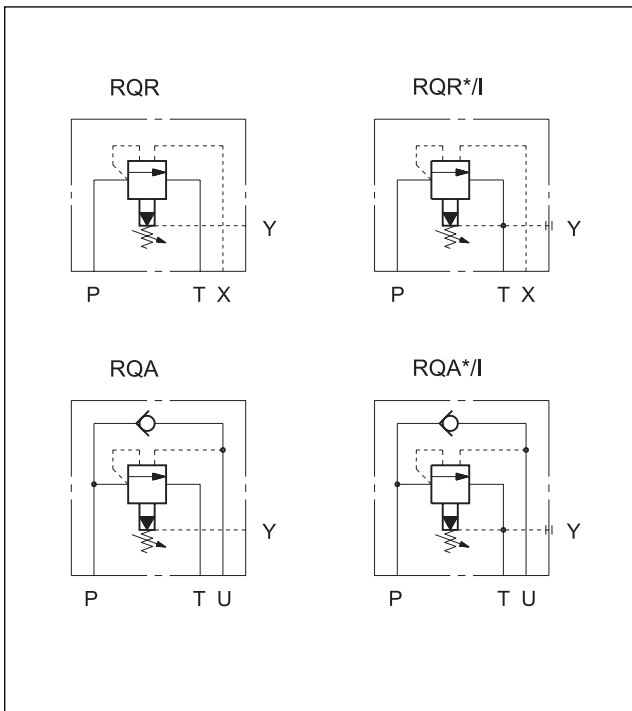
RQ -P**
UNLOADING VALVE
(FOR CIRCUITS WITH ACCUMULATOR)
SERIES 41

RQR* -P
FOR REMOTE PILOTING

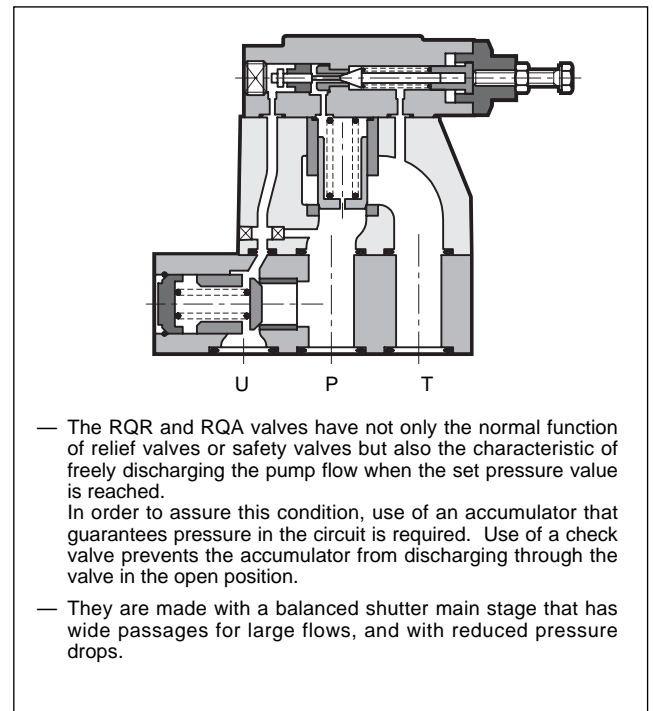
RQA* -P
WITH INCORPORATED CHECK VALVE

SUBPLATE MOUNTING

HYDRAULIC SYMBOLS



OPERATING PRINCIPLE



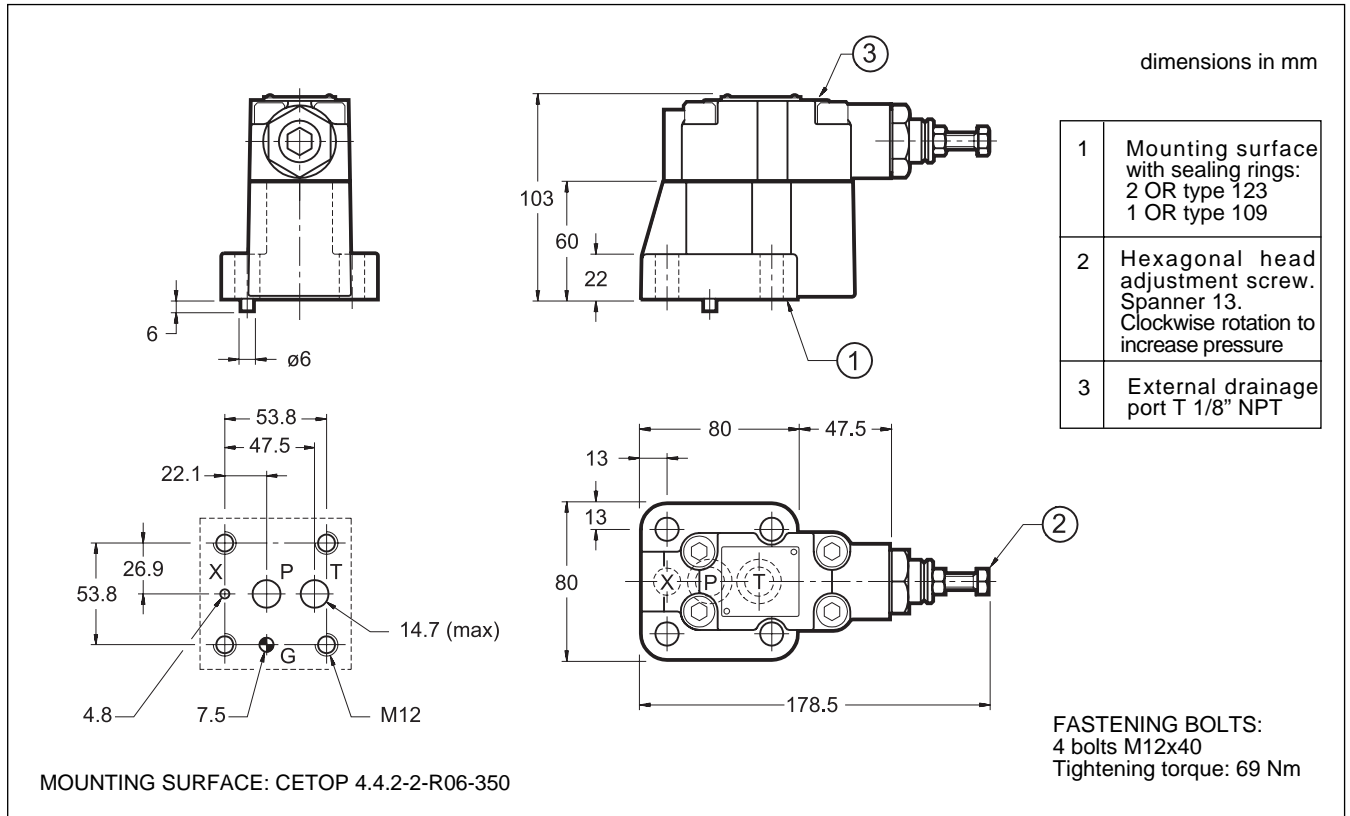
PERFORMANCE RATINGS (measured with mineral oil of viscosity 36 cSt at 50°C)		RQR3-P	RQR5-P	RQR7-P	RQA5-P	RQA7-P
Maximum operating pressure	bar	350			320	
Maximum flow rate	l/min	200	400	500	400	500
Ambient temperature range	°C	-20 ÷ +50				
Fluid temperature range	°C	-20 ÷ +80				
Fluid viscosity range	cSt	10 ÷ 400				
Recommended viscosity	cSt	25				
Degree of fluid contamination	According to NAS 1638 class 10					
Mass	kg	3,5	4,3	6,5	10,4	19



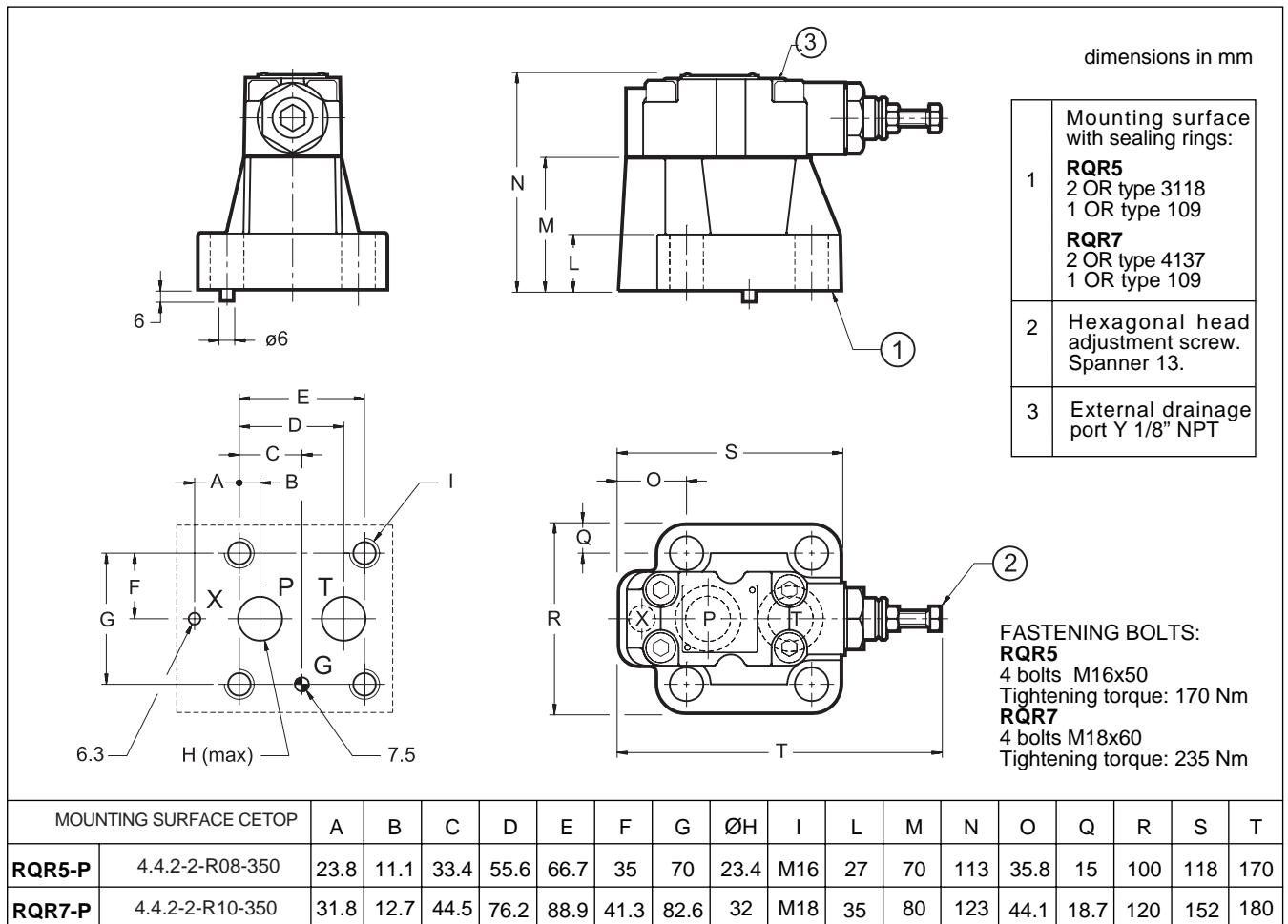
RQ**-P

SERIES 41

4 - RQR3-P OVERALL AND MOUNTING DIMENSIONS

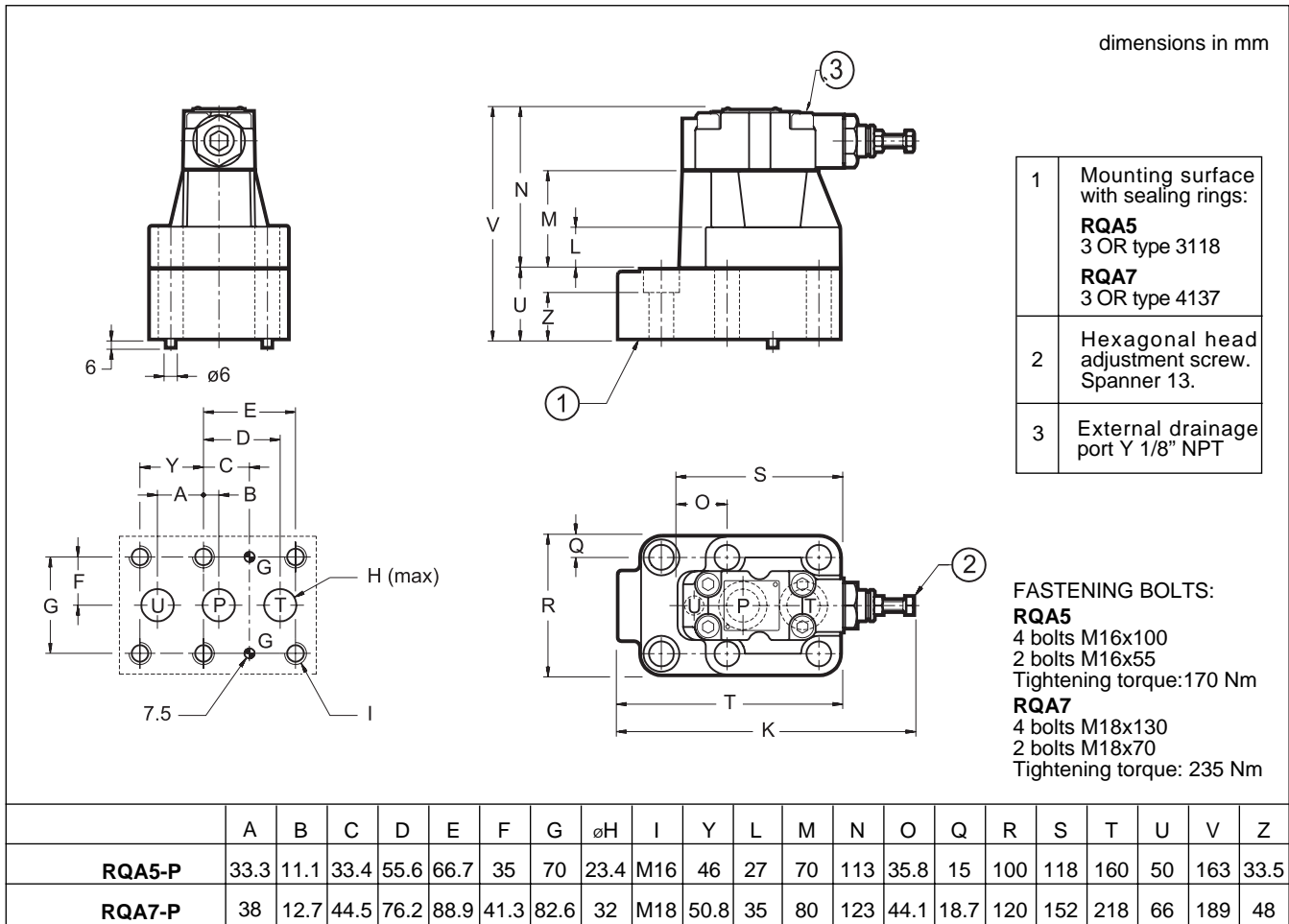


5 - RQR5-P and RQR7-P OVERALL AND MOUNTING DIMENSIONS



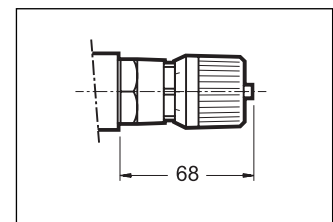


6 - RQA5-P and RQA7P OVERALL AND MOUNTING DIMENSIONS



7 - ADJUSTMENT KNOB

The RQ valves can be equipped with a SICBLOC adjustment knob.
To operate it, push and rotate at the same time.
To request this option, add: /M (see par.1).



8 - SUBPLATES (see catalogue 51 000)

	RQR3-P	RQR5-P	RQR7-P	RQA5-P	RQA7-P
Type	PMRQ3-AI4G rear ports	PMRQ5-AI5G rear ports	PMRQ7-AI7G rear ports	PMRQA5-AI5G rear ports	PMRQA7-AI7G rear ports
Port dimension P T U	1/2" BSP	3/4" BSP	1" 1/4 BSP	3/4" BSP	1" 1/4 BSP
Port dimension X	1/4" BSP	1/4" BSP	1/4" BSP	-	-

	<p>DIPLOMATIC OLEODINAMICA SpA 20025 LEGNANO (MI) - P.le Bozzi, 1 / Via Edison Tel. 0331/472111 - Fax 0331/548328</p>
--	--