



**DIPLOMATIC  
HYDRAULICS**

21 300/103 ED



# RQ\*-P

## PRESSURE RELIEF VALVES

### SERIES 41

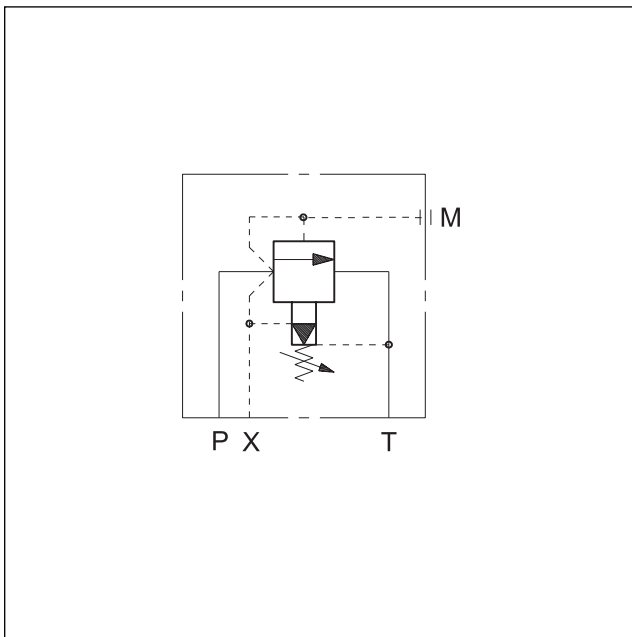
#### SUBPLATE MOUNTING:

**RQ3-P** CETOP R06

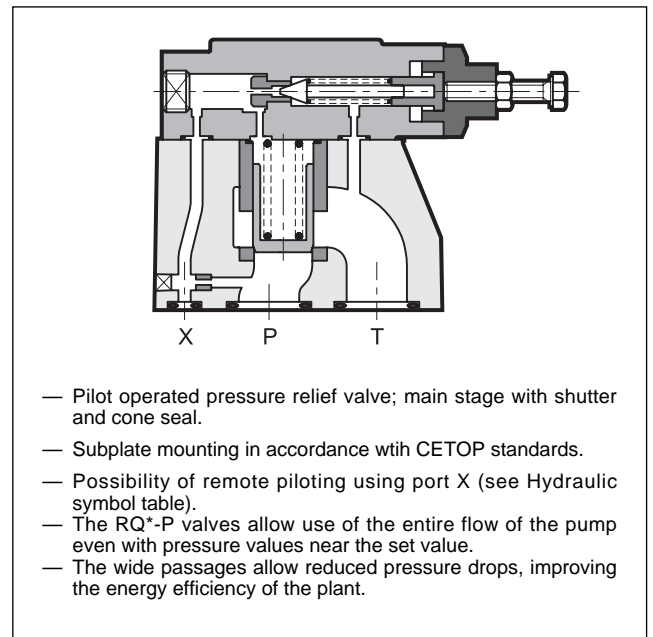
**RQ5-P** CETOP R08

**RQ7-P** CETOP R10

#### HYDRAULIC SYMBOL



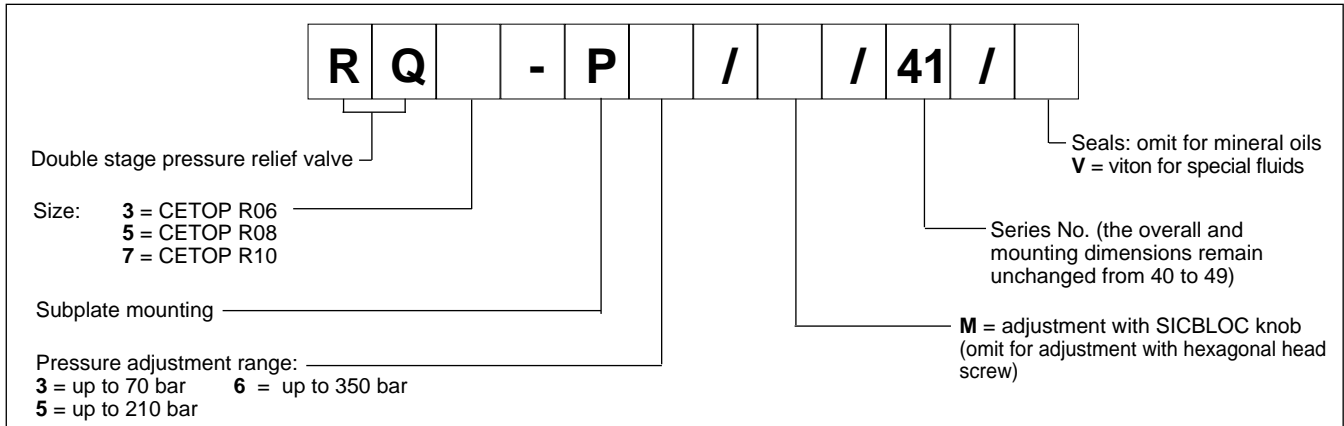
#### OPERATING PRINCIPLE



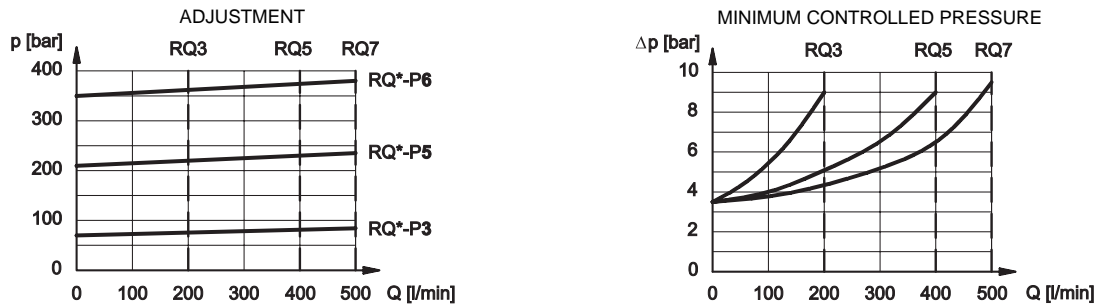
<b>PERFORMANCE RATINGS</b> (measured with mineral oil of viscosity 36 cSt at 50°C)		<b>RQ3-P</b>	<b>RQ5-P</b>	<b>RQ7-P</b>
Maximum operating pressure	bar	350		
Maximum flow rate	l/min	200	400	500
Ambient temperature range	°C	-20 ÷ +50		
Fluid temperature range	°C	-20 ÷ +80		
Fluid viscosity range	cSt	10 ÷ 400		
Recommended viscosity	cSt	25		
Degree of fluid contamination	According to NAS 1638 class 10			
Mass	kg	3,5	4,3	6,5



### 1 - IDENTIFICATION CODE



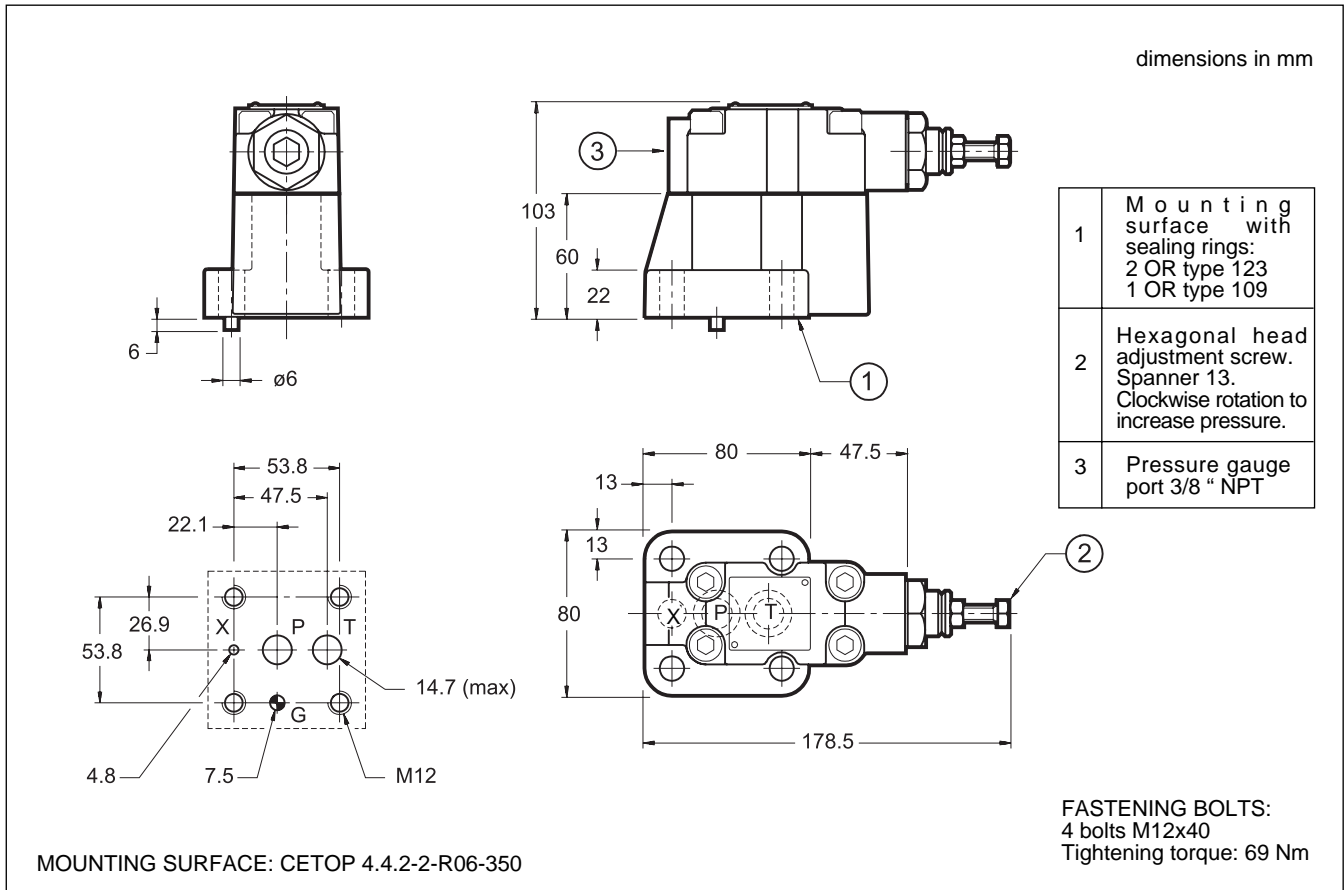
### 2 - CHARACTERISTIC CURVES (values obtained with viscosity of 36 cSt at 50°C)



### 3 - HYDRAULIC FLUIDS

Use mineral oil-based hydraulic fluids, with the addition of suitable anti-frothing and anti-oxidizing agents. For the use of other types (water glycol, phosphate esters and others), please consult our technical department.

### 4 - RQ3-P OVERALL AND MOUNTING DIMENSIONS

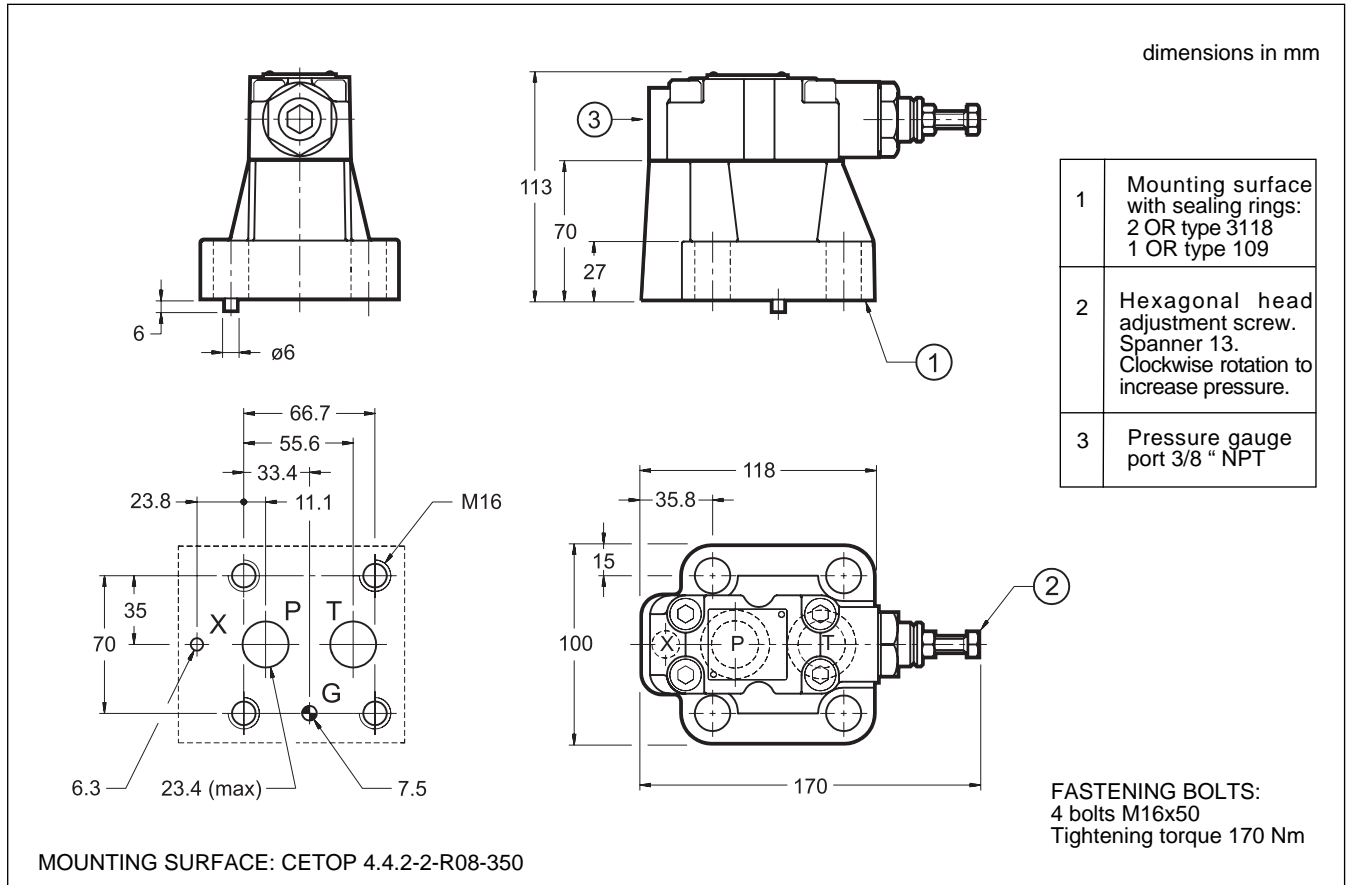




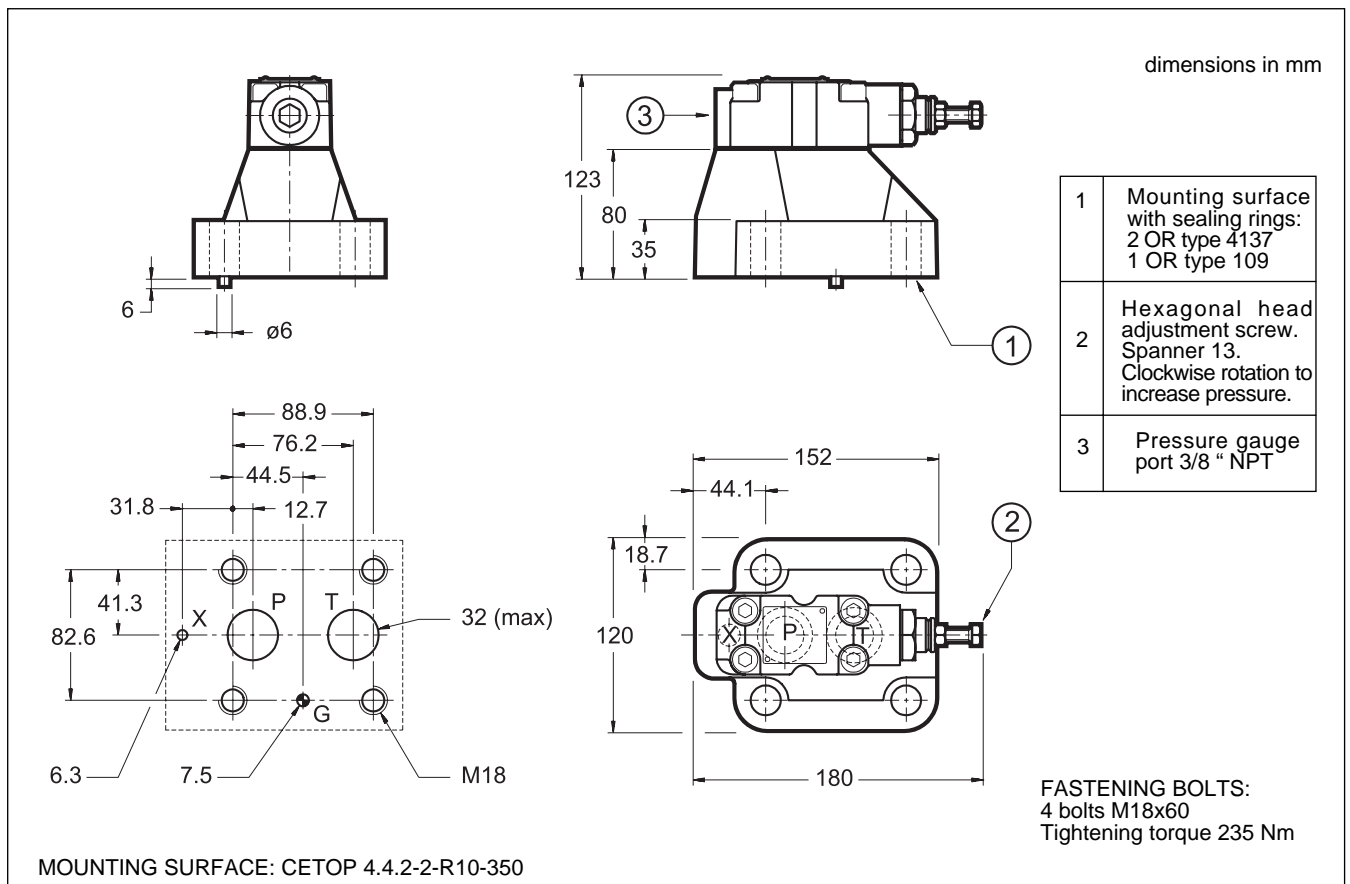
# RQ\*-P

## SERIES 41

### 5 - RQ5-P OVERALL AND MOUNTING DIMENSIONS



### 6 - RQ7-P OVERALL AND MOUNTING DIMENSIONS



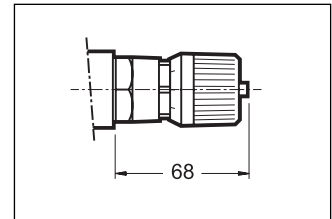


# RQ\*-P

## SERIES 41

### 7 - ADJUSTMENT KNOB

The RQ valves can be equipped with a SICBLOC adjustment knob.  
To operate it, push and rotate at the same time.  
To request this option, add: /M (see par.1).



### 8 - SUBPLATES (see catalogue 51 000)

	<b>RQ3-P</b>	<b>RQ5-P</b>	<b>RQ7-P</b>
Type	PMRQ3-AI4G with rear ports	PMRQ5-AI5G with rear ports	PMRQ7-AI7G with rear ports
Port dimension <b>PT</b>	1/2" BSP	3/4" BSP	1" 1/4 BSP
Port dimension <b>X</b>	1/4" BSP	1/4" BSP	1/4" BSP



**DIPLOMATIC OLEODINAMICA SpA**  
20025 LEGNANO (MI) - P.le Bozzi, 1 / Via Edison  
Tel. 0331/472111-472236 - Fax 0331/548328