



**DIPLOMATIC**  
HYDRAULICS

21 210/199 ED



# RM\*-W

## PRESSURE CONTROL VALVES

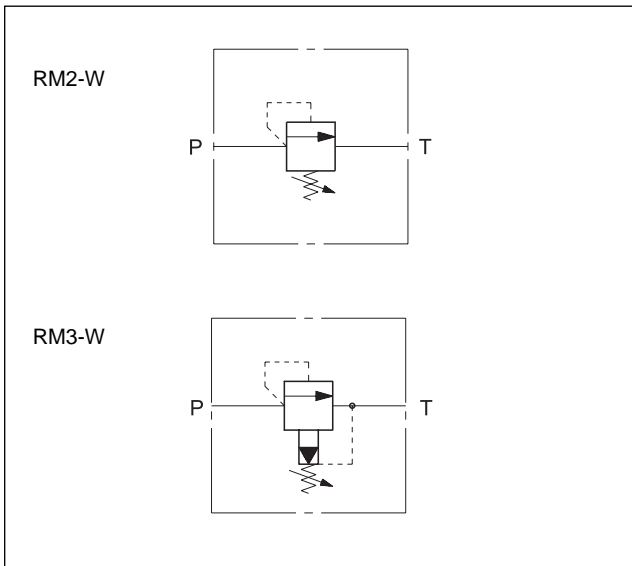
**RM2-W SERIES 31**  
**RM3-W SERIES 30**

### THREADED PORTS

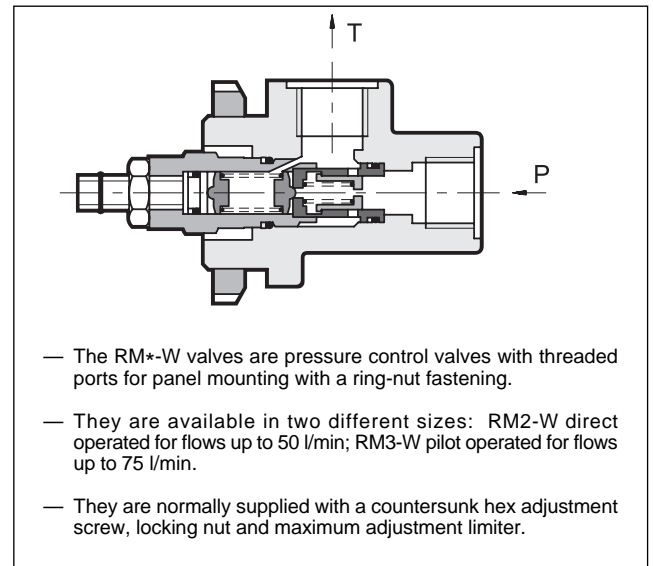
**p** max **350** bar

**Q** max (see performance ratings table)

### HYDRAULIC SYMBOLS



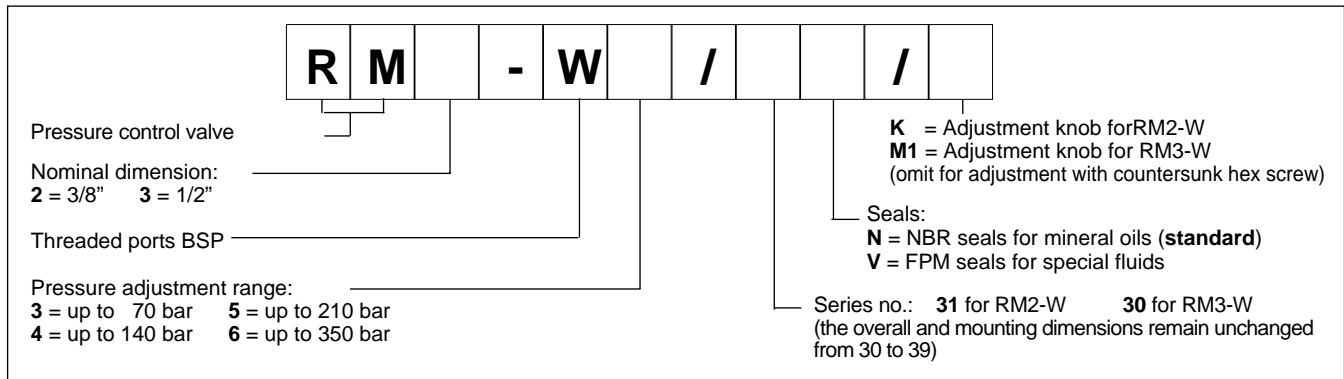
### OPERATING PRINCIPLE



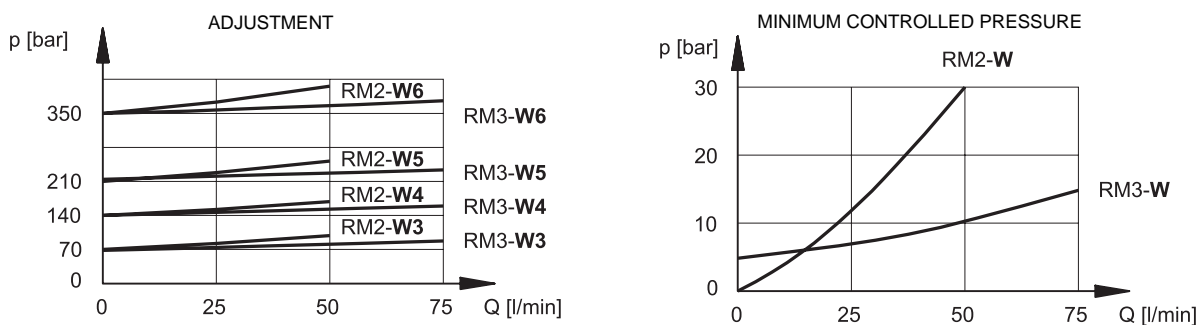
PERFORMANCE RATINGS (measured with mineral oil of viscosity 36 cSt at 50°C)		RM2-W	RM3-W
Maximum operating pressure	bar	350	350
Minimum controlled pressure		see diagram	
Maximum flow rate	l/min	50	75
Ambient temperature range	°C	-20 ÷ +50	
Fluid temperature range	°C	-20 ÷ +70	
Fluid viscosity range	cSt	2,8 ÷ 380	
Recommended filtration	µm absolute	≤ 25	
Recommended viscosity	cSt	25	
Mass	kg	0,9	



## 1 - IDENTIFICATION CODE



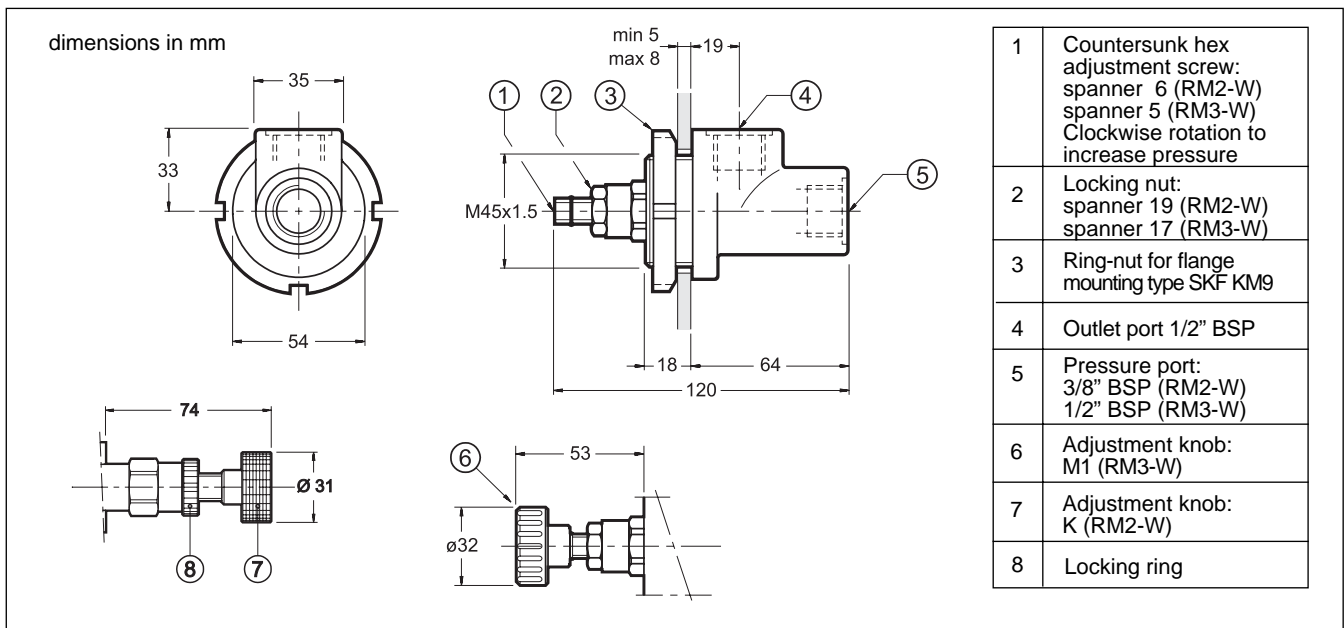
## 2 - CHARACTERISTIC CURVES (values obtained with viscosity of 36 cSt at 50°C)



## 3 - HYDRAULIC FLUIDS

Use mineral oil-based hydraulic fluids, with the addition of suitable anti-frothing and anti-oxidizing agents. For the use of other types (water glycol, phosphate esters and others), please consult our technical department.

## 4 - OVERALL AND MOUNTING DIMENSIONS



**DIPLOMATIC OLEODINAMICA SpA**  
 20025 LEGNANO (MI) - P.le Bozzi, 1 / Via Edison  
 Tel. 0331/472111-472236 - Fax 0331/548328