



**DIPLOMATIC  
HYDRAULICS**

21 150/103 ED



# PCDC06

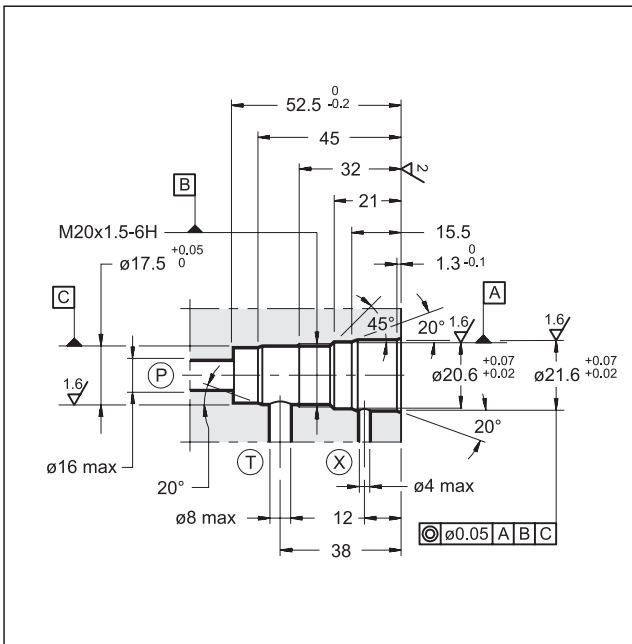
## DIRECT OPERATED THREE-WAY PRESSURE COMPENSATOR SERIES 12

### CARTRIDGE TYPE

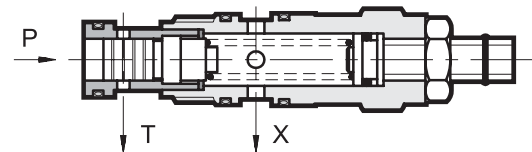
**p** max 350 bar

**Q** max 40 l/min

### SEAT DIMENSIONS D-10D



### OPERATING PRINCIPLE

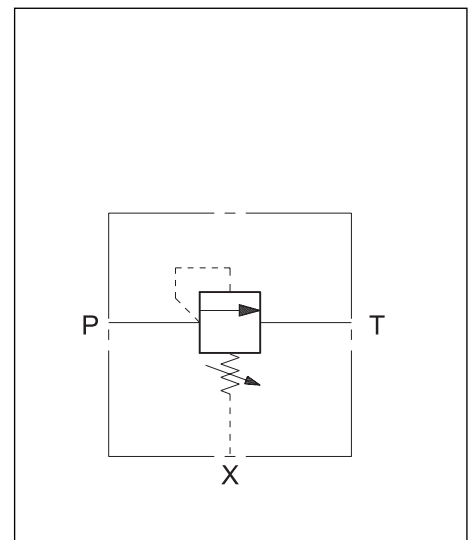


- The PCDC06 valve is a direct operated, three-way, pressure compensator cartridge type for block or manifold application.
- It keeps the pressure drop setting between the P and the X pilot connections, at a constant level.
- It is normally used together with proportional directional valves, in order to control the flow rate independently of the pressure variations.
- The setting of the compensator can be varied from 5 to 40 bar; adjustment can be operated either via a countersunk hex adjustment screw, or via an adjustment knob.

### PERFORMANCE RATINGS (working with mineral oil of viscosity of 36 cSt at 50°C)

Max working pressure	bar	350
Differential pressure regulation range	bar	5 ÷ 40
Maximum flow rate	l/min	40
Ambient temperature range	°C	-20 ÷ +50
Fluid temperature range	°C	-20 ÷ +80
Fluid viscosity range	cSt	10 ÷ 400
Recommended viscosity	cSt	25
Fluid contamination degree	According to NAS 1638 class 10	
Mass	kg	0,2
Surface treatment with white colour zinc	Fe / Zn 8c 1B UNI ISO 2081/4520	

### HYDRAULIC SYMBOL

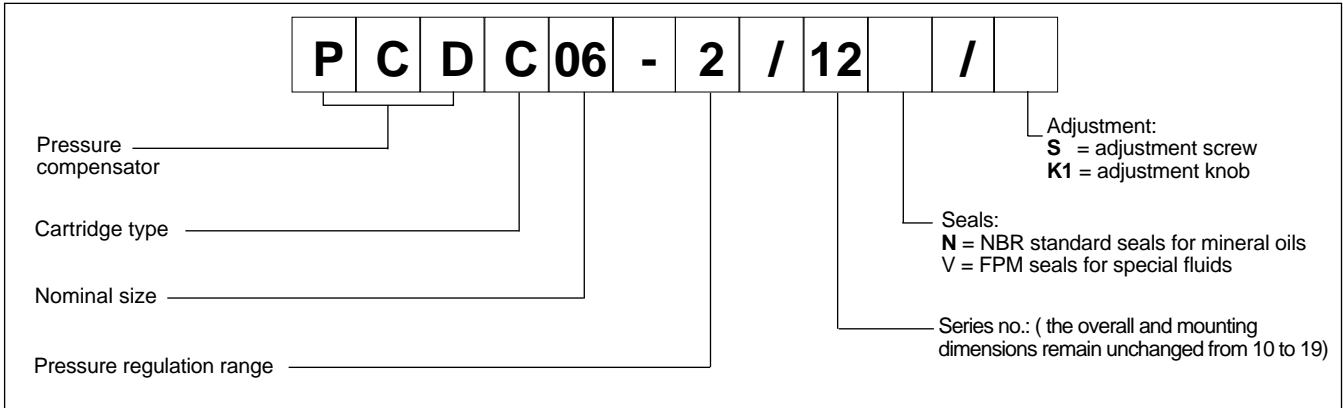




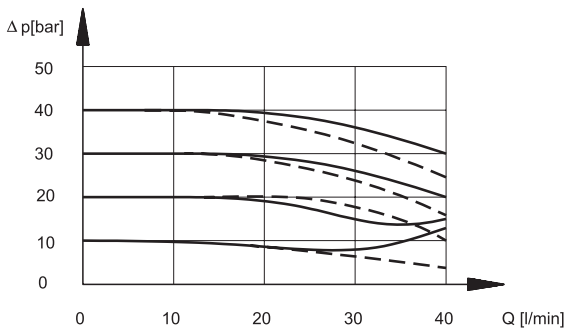
# PCDC06

## SERIES 12

### 1 - IDENTIFICATION CODE



### 2 - CHARACTERISTIC CURVES (values obtained with viscosity of 36 cSt at 50°C)



The control curves of the diagram are stated according to the compensator flow rate change and to different  $\Delta p$  setting between P connection and X pilot connection

————— user pressure = 30 bar  
 - - - - - user pressure = 140 bar

### 3 - HYDRAULIC FLUIDS

Use mineral oil-based hydraulic fluid, with the addition of suitable anti-frothing and anti-oxidizing agents. For the use of other type (water glycol, phosphate esters and others), please consult our technical department.

### 4 - OVERALL AND MOUNTING DIMENSIONS

dimensions in mm

1	OR type 2056
2	OR type 3062
3	OR type 3062
4	Hexagonal: spanner 22 Tightening torque 45 - 50 Nm
5	Locking nut: spanner 17
6	Countersunk hex adjustment screw: spanner 5 Clockwise rotation to increase pressure
7	Maximum adjustment stroke
8	Adjustment knob: K1

	<p><b>DIPLOMATIC OLEODINAMICA SpA</b>          20025 LEGNANO (MI) - P.le Bozzi, 1 / Via Edison          Tel. 0331/472111-472236 - Fax 0331/548328</p>
--	---